

CCC HUNTSVILLE

REGION 1

Bring on Spring!



Special Interest Points:

- CPR & First Aid Training
- Directors' Roundtable
- Save the Date! TCR Early Childhood Conference



TCR Early Childhood Education Conference

Thursday & Friday

8:00 AM to 4:00 PM

September 12 & 13, 2024

Athens State University

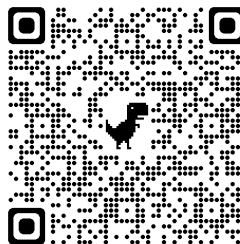
300 N. Beaty St, Athens, AL 35611



Registration is open
from

May 1 to July 15

on Eventbrite



Featured Speakers:



Artist:
John Scalici
Get Rhythm!



Author:
Melody A. Patterson
Harmony's World

This Year's Theme:
I See You!

What does it mean to be seen?

How good are you at seeing the children that you care for?

We mean REALLY seeing them for what they are-perceiving them, making sense of them, and responding to them in timely and effective ways.

This is how a child comes to experience the emotional sensation, not only of belonging and feeling felt, but also of being known. When we show up for the children that we care for and give them the opportunity to be seen, they can learn how to see themselves with clarity and honesty.



Inside this Issue:	
CCC Huntsville Staff	2
College Updates	3
CCEP Training	5
APT Training	6
Alabama's Special Needs Childcare Subsidy	7
Resource Information	8
Kids Korner & STEAMing	9
Infant/Toddler Track	10
Preschool Track	11
School-Age Track	12
Director Track	13
Training for ALL Tracks	14
Building Up for Quality	15
Resource Room & Registration Policies	16
Learning Legend	17
CCC E-Learning Train & Virtual Classroom	18
Online & Virtual Training Opportunities	19
Training Opportunities	20

Child Care Central Staff

Child Care Central is proud to have a team of diverse and dynamic staff with unique skills, talents, and backgrounds. Meet our CCC Huntsville staff and resource room personnel below!

Program Director, Sabrina Robinson



CCC Huntsville Staff



Lindsai Green Robinson
Office Manager



Kimberly Keeton
Trainer/ Early Childhood Specialist



Julia Martin
Trainer/ Early Childhood Specialist



ReKeya Patterson
Trainer/ Early Childhood Specialist



Stacey Robison
Trainer/ Early Childhood Specialist



Kathryn Townsend
Infant/Toddler Specialist



Christine Wright
Trainer/ Early Childhood Specialist

Part-time Staff



Jeff Robison
*E-Learning Facilitator/
Online Specialist*



Avery Danielowicz
*Resource Specialist,
Northwest Shoals Community College*

CCEP Training

Area Training



Child Care Enhancement With a Purpose Community Trainings



Madison Co.- Thursday, April 18th from 6:00-8:00 p.m.
UCP Huntsville
1856 Keats Drive NW, Huntsville, AL 35810

Limestone Co.- Thursday, May 16th from 6:00-8:00 p.m.
Athens Recreation Center
21821 Sportsplex Loop, Athens, AL 35611

Morgan Co.- Thursday, June 20th from 6:00-8:00 p.m.
First Baptist Decatur
123 Church St., Decatur, AL 35601

To register, email Marisa Estrada at mestrda@ucphuntsville.org
or by phone at (256) 859-4900.

Cullman Co.- Wednesday, April 3rd from 6:00-8:00 p.m.
Heritage Learning Center
1634 Lee Ave SW, Cullman, AL 35055

To register, email Anna Grace Whaley at awhaley@ucphuntsville.org
or by phone at (256) 859-4900.

Lawrence County-April 25, 2024 from 6:00 – 8:00 p.m.
Kids Kount
23631 AL-24, Trinity, AL 35673

Colbert County-May 23, 2024 from 6:00 – 8:00 p.m.
Helen Keller Library
511 N Main St, Tuscumbia, AL 35674

Marion County- April 18, 2024 from 6:00 – 8:00 p.m.
Happi Faces Daycare
323 Rock Ridge Rd, Winfield, AL 35594

Franklin County- June 20, 2024 from 6:00 – 8:00 p.m.
A.W. Todd Center/Bishop Center
201 N Washington Ave, Russellville, AL 35653

To register, email Michala Steele at msteele@ucphuntsville.org
or by phone at (256) 859-4900.



CPR & First Aid Training

Anna McCay, RN, of Healthy Child Care Alabama will be offering CPR training at the CCC Huntsville office from **9AM-12:30PM** on the following days:

Monday, April 15
Wednesday, May 8
Thursday, June 20

To register, please call Anna at (256) 533-8711.

Director's Roundtable



This collaboration provides a space for leaders of the early childhood education community to come together and share information and connect through roundtable discussions. We strive to foster a professional community that supports quality improvement in family child-care, group child-care, child-care centers, and preschools. Directors from a wide range of early childhood programs participate in facilitated meetings to share concerns, engage in problem-solving, and engage in peer learning opportunities and training on topics of mutual interest. This training session is worth 2 hours of credit, and is for **acting directors and FCC/GCC licensees ONLY**. Light refreshments including coffee, tea, and pastries will be served.

Colbert

Date & Time:

Tuesday May 21, 2024
10:00AM– 12:00 PM

Location: NWSCC Bldg. 110, 800 George Wallace Blvd.
Muscle Shoals, AL 35661

Madison

Date & Time:

Wednesday April 17, 2024
10:00AM– 12:00 PM

Location: CCC Huntsville Office
2006 Franklin St. SE Suite 103
Huntsville, AL 35801

To register, please call us at (256) 551-7016.

College Updates



ATHENS STATE UNIVERSITY



COLLEGE OF EDUCATION
ATHENS STATE UNIVERSITY

Early Childhood
DEPARTMENT

OFFERING TEACHER AIDE CERTIFICATES!

By taking just 3 courses, your career path can lead to a position such as an Auxiliary Teacher in a Pre-K Program and/or CDA.

EARN YOUR CERTIFICATE IN JUST ONE SEMESTER!

YOUR CONTACT
FOR MORE INFORMATION

Dr. Darlene Turner-White
☎ (256) 216-6611 ✉ Darlene.Turner-White@athens.edu

The T.E.A.C.H. (Teacher Education and Compensation Helps) Early Childhood® Alabama Scholarship is for individuals who are working as child-care and pre-school teachers, directors, and family child care home providers in a Department of Human Resources (DHR) licensed child care or First-Class Pre-K program that is willing to sponsor the recipient.

The program provides the opportunity for individuals currently working in the early childhood field to take coursework to increase their knowledge and skills by giving them access to early childhood credentials and a college degree. More information can be found at <https://>

Northwest Shoals
COMMUNITY COLLEGE
CHILD DEVELOPMENT

ONLINE CLASSES
AVAILABLE FOR SUMMER

CHD100
INTRO TO EARLY CARE AND
EDUCATION

CHD201
CHILD GROWTH AND
DEVELOPMENT PRINCIPLES

CHD206
CHILDREN'S HEALTH AND
SAFETY

CHD210
EDUCATING CHILDREN
WITH EXCEPTIONAL NEEDS



CONTACT
SUSIE TVERBERG
256-331-5450 OR
LAURA.TVERBERG@NWSCC.EDU

College Updates & Scholarship Information



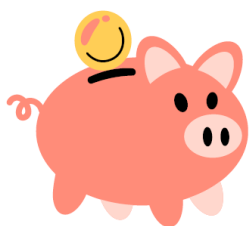
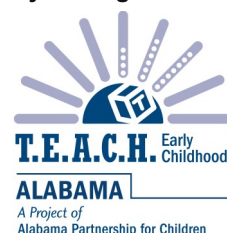
100% Online

Earn your short-term certificate and degree online.

All classes are available online. Complete your 120 required clock hours for CDA training in one semester with three CHD courses.



Scholarships are available to assist you in obtaining your degree!



Scholarships

Are you already working with young children?

You may be eligible for a scholarship! Find out more about the Leadership in Child Care Scholarship or the T.E.A.C.H. Scholarship

The A.A.S. in Child Development at Wallace State Community College is accredited by the Commission on Early Childhood Higher Education Programs of the National Association for the Education of Young Children. The accreditation term runs from March 2021 until March 2028.

NAEYC
1401 H Street NW, Suite 600
Washington, DC 20005
800.424.2460, Ext 8007



T.E.A.C.H. Early Childhood® ALABAMA is a scholarship program that was developed to increase the level of education and effectiveness of early learning professionals by make the education process more affordable, increasing wages, and reducing staff turnover rates. Scholarships are currently offered for the CDA (Child Development Associate) Assessment Fee, Associates Degrees in Child Development and Early Care and Education and Bachelor Degrees in Child Development and Early Education.

Contact: Michelle Raybon at (334) 271-0304 or email at mraybon@smartstartalabama.org



Social Media | Contact



Like and follow Wallace State Child Development on Facebook



Scan here for more about WSCC's Child Development Program

www.wallacestate.edu/childdevelopment

Contact Dr. Marcie Robinson
marcie.robinson@wallacestate.edu
(256) 352-8383

The Leadership in Child Care Scholarship

This scholarship is designed for the eligible recipient to obtain a Child Development Associate (CDA) plus Assessment Fee; Short-Term Certificate; Certificate, or Associate in Applied Science/Technology Degree in Child Development/ Early Care and Education studies at a designated institution in the Alabama Community College System. Eligible recipients can also obtain a Bachelor of Science Degree in Early Childhood Education at Athens State University.

Contact: Virginia Frazer at (334) 293-4552 or email at virginia.frazer@accs.edu

Easily Apply

Applications will be accepted August 1st through November 1st for Spring semester admission. Applications received after November 1st will be considered on a space available basis.



Scan here to begin your application at WSCC

www.wallacestate.edu/register-now/index.html



Scan here for more information about the Child Development program application process

www.wallacestate.edu/programs/health-division/child-development/chdapp.html



www.wallacestate.edu

TCR Child Care Corporation: Providing Programs with a Purpose

www.tcrchildcarecorporation.org
(256) 551-7016

APT Training

Alabama Public Television: Spring 2024 Facilitated Training Information Registration opens March 11, 2024

[AELG Online \(Alabama Early Learning Guidelines\)](#)

April 1 – May 19, 2024

The Alabama Early Learning Guidelines were developed by DHR to promote continuity of high-quality care and learning for children ages 0-5. Participants who complete this 7-week course will receive 18 training hours and the training Award Credential issued by the Alabama Department of Human Resources. This course can only be taken once. If you have received this credential through the face-to-face version of AELG training, or if you have previously completed this course online, you will not receive a second credential or training credit for taking this course a second time.

Training Level: Basic; **Target Age Group:** Infants, Toddlers, and Preschoolers;
Training Hours: 18; **DHR Training Hours:** CD, CCPF, QCCL, PDG, LD, HSUP;
CDA Subject Areas: 1, 2, 3, 4, 6, 7, 8; **CKA Content Areas:** CGD, COA, ICFC, DIV, HSN, PPD;
CCDF Training Areas: 13, 15, 16, 17, 18, 20; **Quality Indicator:** B

[Sesame Street in the Classroom: Training, Resources, and Support for Early Childhood Educators](#)

April 1 - April 22, 2024

As an early childhood educator, you make a difference every day by helping children and families grow smarter, stronger, and kinder. During this facilitated training, you will learn how to use Sesame Street in Communities resources to support you in this important work. Through this training, you will enrich and expand your knowledge using multi-media tools from Sesame Street in Communities to provide critical early learning opportunities for the children in your care. This training will cover social and emotional well-being concepts, health and safety best practices, as well as early math and literacy skills. Upon completion of this course, participants will receive a certificate for 15 training hours.

Training Level: Basic; **Target Age Group:** All;
Training Hours: 15; **DHR Training Areas:** CD, HSUP, QCCL, CCPF, LD, PGD;
CDA Content Areas: 1, 2, 3, 4, 7, 8; **CKA Content Areas:** CGD, HSN, LEE, COA, ICFC, PPD;
CCDF Training Areas: 4, 7, 13, 16, 17, 20; **Quality Indicator:** M

[Essential Math Skills for Preschoolers: Kindergarten Readiness](#)

April 1 - April 22, 2024

Research indicates that the development of mathematics skills in preschool is a predictor of school success in kindergarten and beyond. Throughout this fun, informative training, you will learn tips, activities, and best practices for preparing the preschoolers in your care for academic success by incorporating intentional math interactions and exercises into everyday lessons and activities. Join us to learn how teaching math concepts can be simple and fun with PBS and PBS KIDS resources!

Training Level: Basic; **Target Age Group:** Preschoolers;
Training Hours: 15; **DHR Training Area:** CD, QCCL, CCPF;
CDA Subject Area: 2, 6, 8; **CKA Content Areas:** CGD, LEE, PPD;
CCDF Training Area: 13, 17, 19; **Quality Indicator:** E

[Implementing PBS Kids Resources in the Child Care Setting](#)

May 6th – May 27, 2024

PBS Kids has an abundance of high-quality educational resources created especially for every age range with corresponding, developmentally appropriate topics. PBS Kids resources include activities, shows, games, and lesson plans to make it easier for caregivers to enhance children's learning using multi-media content that is free and always accessible. In this 15-hour facilitated training, participants will gain an understanding of the resources available through PBS Kids and explore strategies for using them in the child care setting.

Training Level: Basic; **Target Age Group:** ALL;
Training Hours: 15; **DHR Training Areas:** QCCL, LD;
CDA Subject Areas: 2, 8; **CKA Content Areas:** LEE, PPD;
CCDF Training Areas: 13, 16; **Quality Indicator:** M

[Talking to Young Children About Race and Racism](#)

May 6th – May 27, 2024

In this free, 3-week facilitated course, participants will explore the topics of race and racism and gain a clear understanding of how and why it persists. Participants will develop a deeper understanding of diversity, tolerance, compassion, and empathy toward others. This workshop will also explore how educators can learn to successfully lay the foundation for inclusion and acceptance in the child care setting by promoting awareness as we strive toward a more ethnically inclusive world.

Training Level: Basic; **Target Age Group:** All;
Training Hours: 15; **DHR Training Areas:** CD, CCPF, PDG;
CDA Content Areas: 2, 3, 4, 6; **CKA Content Areas:** CGD, LEE, DIV, ICFC, PPD;
CCDF Training Areas: 13, 14, 16, 19, 20; **Quality Indicator:** G

To register for each training, click the training title links above. For additional information, please visit:
<https://www.aptlearnonline.org/>

Alabama's Special Needs Childcare Subsidy

ALABAMA'S NEW SPECIAL NEEDS CHILDCARE SUBSIDY

Facts for Service Providers to Share with Families

Frequently Asked Questions (FAQs)

"DOES MY CHILD ALREADY HAVE TO BE IN DAYCARE?"

No, but please begin looking.

Eligibility does not guarantee childcare placement. The parent is responsible for identifying and enrolling their child in a DHR licensed childcare center or family/group home.

"IS THERE AN AGE LIMIT?"

No, as long as they are enrolled in before/after care or summer care at a licensed daycare center.

"ARE THERE ANY INCOME OR EMPLOYMENT REQUIREMENTS?"

No, the child's service plan (IEP or IFSP) is what qualifies them.

IS THERE AN APPLICATION ONLINE?

No, please **HAVE PARENTS** contact Melissa Anderson to apply!



About the Subsidy

Financial assistance is now available for qualifying Alabama families of a child with special needs to attend quality, inclusive childcare programs statewide. To qualify, the child must be receiving services (IFSP, IEP, or outpatient services provided AT THE DAYCARE CENTER for speech, occupational or physical therapy).

To learn more, or to determine eligibility, contact Melissa Anderson. Statewide Childcare Enhancement with a Purpose Project Manager at 256-859-4900.

Please send all service plans by email to manderson@ucphuntsville.org or by fax at 256-859-4332.

Resource Information

Resource Room Contact Information

Child Care Central Huntsville
 2006 Franklin Street, Suite 103
 Huntsville, AL 35801
 (256) 551-7016

Hours of Operation: Monday—Friday: 8AM - 4PM

Child Care Resource Center
Athens State University
 Chasteen Hall, Room 105
 161 North Clinton St.
 Athens, AL 35611
 (256) 551-7016

Hours of Operation: *Please call number above for hours of operation OR to schedule a visit!*

Child Care Resource Center
Northwest-Shoals Community College
 Muscle Shoals Campus
 800 George Wallace Blvd.
 Muscle Shoals, AL 35661
 (256) 375-4974

Hours of Operation: *Please call number above for hours of operation OR to schedule a visit!*

Child Care Resource Center
Wallace State Community College
 Tom Bevill Health Education Bldg. Room 419
 (4th Floor)
 801 Main Street NW
 Hanceville, AL 35077
 (256) 551-7016

Hours of Operation: *Please call number above for hours of operation OR to schedule a visit!*

Activity Pack

If you would like an activity pack mailed or emailed to you, please give us a call at (256) 551-7016 or email us at region1@tcrchildcare.org!

Themes this quarter:

April – Caring for Our Earth
May – Parent Appreciation
June – At the Zoo!



The Activity Pack includes classroom ideas, fine & gross motor skills ideas, center & circle time ideas, songs, finger plays, games, and more!

Kids Korner & STEAMing

Kids Korner

April 2024

Infant/Toddler: *Old MacDonald Had a Farm*

Everyone knows the song, but can you name all the animals and their sounds? Come join Old MacDonald and sing about the animals that you can find on his farm.

Preschool: *Spring Sings for the Grouchy Ladybug*

This book celebrates the new life that blossoms during spring. The animals are playing outside, the flowers are blooming, and everyone is joyous—even The Grouchy Ladybug!

Eric Carle's signature bright collage illustrations feature leaping frogs, buzzing bees, friendly turtles, singing birds, dancing butterflies, and more springtime scenes.

May 2024

Infant/Toddler: *I See Spring*

"I See Spring" has illustrations that are bright and beautiful. In this book, children will learn all about the delights of spring ranging from tail-chasing puppies to scampering squirrels to bluebells and yellow daffodils. The beautiful pictures and rhyming words will keep babies and toddlers engaged as you read and discuss what you see!

Preschool: *Looks Like Spilt Milk*

Is it a rabbit, a bird, an ice-cream cone, or just spilt milk? In this childhood classic, kids are kept guessing until the surprise ending. The children are asked to guess what the shape is or whether it is just "spilt milk".

June 2024

Infant/Toddler: *Where's Spot?*

Help mother dog find her puppy. Spot is hiding somewhere in the house and his mother is looking everywhere to find the dog. While searching, she finds other animals hiding behind the door, inside the clock, and under the stairs, but not her puppy. Can you guess where the mother dog finds Spot hiding?

Preschool: *You Get What You Get*

Melvin has a huge problem. He throws a fit and has a temper tantrum when he doesn't get what he wants. That's until he learns one rule that helps him deal with disappointment. "You get what you get, and you don't throw a fit."

STEAMing

April 2024

Walking Water Science Experiment for Kids

Spring is here! The earth is bursting forth with magnificent colors. The children are going to love this experiment. With a bit of science, they'll get to see how water can move and mix colors all by itself. It's mesmerizing to watch and your kids will have so much fun learning at the same time.

May 2024

How does Soap work

Soap and pepper experiment: Science experiment that shows kids how soap works. The best way to help kids wash better is to teach them how soap works to make germs go away. And you can easily do that at home with a little water and pepper.

June 2024

Paper Strip Airplanes

Have you ever wanted to be a pilot, but you are afraid of flying? Now you can pilot your own plane and keep your feet planted firmly on the ground. You can use basic items that you already have in your home or classroom to create an airplane. Once everyone has constructed their planes you will be ready to take flight and race to the finish.

Call (256) 551-7016 to request a reader for Kids Korner or a kit for STEAMing.
Available to ALL counties in Region 1. First come, first served!

Infant/Toddler Track

Training sessions offered this quarter:

Finding Peter Pan

Have you ever looked at your babies and wondered why they don't know how to play or who plays with them when they aren't with you? The reality is that not all parents and caregivers know how to play. This class will give you resources to help your parents learn to be a kid again and learn to play with their children to encourage and promote their child's growth and development.

Trauma Responsive Care Strategies & Practices

The third session in the trauma-responsive care series will begin with exploring a variety of trauma-responsive caregiving strategies—from building secure and responsive relationships and attachment, to creating trauma responsive routines, trauma-responsive environments for babies and toddlers and the importance of play. Participants will explore in depth the importance of responsive and nurturing strategies and practices. They will explore how to create trauma-sensitive environments. And they will examine how play and other trauma responsive practices and strategies can support babies and toddlers.

Promoting Good Eating Habits

Growing infants and toddlers adapt physically and mentally to the challenges of eating. They develop specific skills for feeding and eating in addition to developing taste, texture and food preferences which impact the types of foods they are willing to eat. This training will explore developmental stages in infant and toddler feeding and how childcare professionals can support them during their diet transitions.

APT: Stop, Look, And Listen: The Value of Observation

Did you see that? Did you hear that? Look! It's over here. Observation is one of the most powerful, accessible tools in childcare. In this training, we will discuss ways to implement and improve on what is seen and heard, and what to document while using hands-on activities, videos and books.

Good Job!

Child care providers have a great responsibility for nurturing a child's confidence and sense of self. We want to focus on positive reinforcement while giving praise and offering redirecting when needed. In this class we will explore ways to minimize behavior issues by creating daily schedules, providing positive reinforcement, redirecting undesirable behavior, and providing smooth transitions throughout the day.

APT: Stop, Look and Listen: The Value of Observation

Did you see that? Did you hear that? Look! It's over here. Observation is one of the most powerful, accessible tools in childcare. In this training, we will discuss ways to implement and improve on what is seen and heard, and what to document while using hands-on activities, videos and books.



Preschool Track

Training sessions offered this quarter:

Reading Between the Lines

Providing developmentally appropriate early literacy experiences, not only can inspire a love of reading and build reading fluency, but it also supports social-emotional skills! Did you know that all books are social-emotional learning books? This training will focus on interactive reading techniques and strategies for story time to foster social-emotional learning.

I Feel What You're Saying: Developing Expressive and Receptive Language in Young Children

Language is an important part of a child's cognitive development. Every day of their lives, children will have to communicate with others. In order to develop expressive language skills, a child needs to first develop receptive language skills. In this class we will learn ways to help children develop expressive and receptive language to understand language and spoken words; as well as express what they are thinking, feeling, and need.

APT Presents: Bringing Books to Life

Explore how to bring books to life in a new way for preschoolers. Using Author Studies, creative storytelling and book activities, we will discover how to plan fun literacy experiences for everyday learning.

Count Me In

We find it easy to talk about language and literacy, but what about math. Often teachers do not like to focus on math because they don't like it or feel that it is too hard to teach. Teachers will learn ways to promote general knowledge that will support emerging math skills in children.

APT: Exploring Curiosity, problem solving and critical thinking with PBS Kids

In this 2-hour training, using PBS KIDS shows as a starting point, participants will discuss ways to build and support curiosity, how to implement problem-solving and where to use critical thinking. The training will support this learning with engaging discussions, hands-on activities, and the use of children's books.

APT Presents: Bringing Books to Life

Explore how to bring books to life in a new way for preschoolers. Using Author Studies, creative story-telling and book activities, we will discover how to plan fun literacy experiences for everyday learning.

Making Choices

Just like learning to ride a tricycle, using safety scissors, or helping to dress and undress themselves, preschoolers are also learning to make good choices. All these skills develop gradually. Learning to make good choices depends on the examples shown by adults in their lives. Preschoolers need practice and support developing these skills. This training will offer some suggestions to help you support them as they learn how to make good choices.



School-Age Track

Training sessions offered this quarter:

APT: SWEET HOME ALABAMA

What is the sweetest state in the south? Alabama, of course! In this 2-hour training we will visit the history, culture, and the foods of Alabama through the eyes of children. Come along with us and discover things that are simply Alabama.

APT-Navigating Challenging Circumstances: What Are Kids Facing Today?

These are challenging times for kids. Many kids are faced with not being accepted, bullying, lacking proper housing or food and many more social issues. This training will address some of those challenging circumstances using videos and discussions.



Director Track

Training sessions offered this quarter:

Positive Guidance

Positive guidance in early childhood is an essential part of providing care to children. Through positive guidance directors can create an encouraging setting for their staff and children in their care.

APT: The Power of Decision Making

Navigating the decision-making process can be difficult for our youth. Through discussions and hands-on activities, participants will discover positive ways to teach the power of decision making.

Collaborative Leadership

Collaboration in an early childhood setting is imperative and transformational. Stacie Goffin, states, "Leadership is an activity rather than a role". Collaborative leadership is about working with others valuing and nurturing their strengths. Likewise, collaboration begins when individuals working together share resources, time, decision making, and mutual trust for a common goal. This training will address effective practices to support healthy, strong collaboration.

Directors' Roundtable

This collaboration provides a space for leaders of the early childhood education community to come together and share information and connect through roundtable discussions. This training session is worth 2 hours of credit, and is for acting directors and FCC/GCC licensees ONLY. Light refreshments including coffee, tea, and pastries will be served.

Colbert

Date & Time: Tuesday May 21, 2024, 10:00AM– 12:00 PM

Location: NWSCC Bldg. 110, 800 George Wallace Blvd. Muscle Shoals, AL 35661

Madison

Date & Time: Wednesday April 17, 2024, 10:00AM– 12:00 PM

Location: CCC Huntsville Office

To register, please call us at (256) 551-7016.

Training for ALL Tracks

Training sessions offered this quarter:

Basics in Child Care

Being an early childhood educator requires you to be willing to wear many hats. As a new educator, remember that your job description may change on a daily basis. As an early childhood educator, you will be challenged to find new experiences to share with children. Basics in Child Care will guide educators through six fundamental areas of early childhood development to prepare them for caring for children, to be knowledgeable of child development, resourceful in planning activities, skilled in guiding behavior, and able to maintain healthy environments.

*To meet the requirements given for facilities participating in the Child Care Subsidy Program, we offer CCDF Areas together in 2 hour training sessions. CCDF 9 is available via our E-learning site. **Some sessions are available only every other quarter.***

CCDF Areas 1 & 3: Prevention & Control of Infectious Diseases/Administration of Medication

Daycares and preschools sometimes have a reputation for being “germ factories.” That is to say, little people are often sick. As providers, we would love to avoid the sniffles, the fevers, and other discomforts associated with childhood illnesses. We will look at how to keep our children as healthy as possible.

CCDF Areas 2 & 6: SIDS & Safe Sleep Practices/Shaken Baby Syndrome & Abusive Head Trauma

This training will provide an overview of reducing the risk of sudden infant death syndrome (SIDS), using safe sleep practices for child care settings, identifying and preventing shaken baby syndrome.

CCDF Areas 4 & 7: Emergencies Due to Food & Allergic Reactions/Emergency Preparedness

We will look at the standards that pertain to programs developing contingency plans for emergencies or disaster situations when it may not be possible or feasible to follow standard or previously agreed upon emergency procedures. We will also look at how to prepare and care for children with food allergies.

CCDF Areas 5 & 8: Building & Physical Premises Safety/Handling & Storage of Hazardous Materials

“Children need to be safe in order to learn and develop their full potential... because young children like to explore, consistent safety practices...prevent children from getting into dangerous situations.” - National Center on Early Childhood Quality Assurance. This training will review and observe potential health and safety hazards. We will also identify strategies to prevent injuries in any environment.

CCDF Areas 10 & 11: Child Abuse & Neglect/First Aid

In this training, participants will learn how federal legislation lays the groundwork for state laws on child maltreatment by identifying a minimum set of actions or behaviors that define child abuse and neglect, and how to identify and develop skills they need to understand in meeting a child’s emotional, physical, and developmental needs. This training will also equip participants with a basic knowledge of first aid and skills to help with sick or injured children in their care that is mandated by state law. **This training does not cover CPR.**

The Guiding Light

There’s a lot to think about when it comes to teaching. You plan and deliver lessons to cover the curriculum. You adjust your lesson plans to meet your students’ needs. On top of it all, you manage student behavior. You guide a child’s behavior by establishing predictable routines, setting clear rules with children, and modeling kindness and respect. You are also attentive and aware of what is going on. Together, these actions help children feel noticed, confident, and secure.

Mother Goose on the Loose

Do you remember Mother Goose? Mother Goose has faded out over the years. During this training, you will use popular Mother Goose rhymes to increase your knowledge on how to use music and finger plays to create language development opportunities for children.

Building Up for Quality

The purpose of the Building Up for Quality initiative is to reach out to early childhood education directors with the following questions:

1. What do you think your teachers might need?
2. How can we build up your teachers, and not tear them down?

We will work side-by-side with center directors and classroom teachers. The director will give CCC staff a professional development plan for their staff. We will then prepare for aiding the classroom teachers and building them up for higher quality services. CCC staff will visit and observe classrooms, as requested by directors. The teacher will be given a 2-question evaluation. After observing the classroom, CCC staff will demonstrate/model appropriate classroom behavior/management techniques. The teacher will then be given the opportunity to demonstrate what they have learned. CCC staff will continue to work with the teacher as they, along with the director and teacher, feel necessary. The evaluation will be given again at the end of the session. **Each session will count as a 1-hour training for the classroom teacher, and they will receive a professional development certificate that meets DHR Performance Standards.**

To request a Building Up for Quality Training for your teacher, please call us at (256) 551-7016.



Resource Room & Registration Policies

Due to **COVID-19**, CCC has made several policy updates to our resource room usage, as well as our registration policies, to ensure the health and safety of CCC staff, as well as childcare providers we serve.

These changes are in effect until further notice. Thank you for helping us stop the spread!

Resource Room

- You **MAY NOT** enter if you are sick or showing symptoms of COVID-19. **NO EXCEPTIONS.**
- **Masks are now optional. If you would like a mask, we will provide a disposable one for you!**
- **Please use hand sanitizer upon entry AND exit.**
- **The resource room is open 8AM—4:30PM, Monday—Friday. Appointments are no longer required.** Please disinfect each machine you use with provided cleaning materials.
- **We will be checking temperatures at the door. If you have a temperature of 99.9° or above, you will not be permitted entry into the building.**
- **Lamination may take up to a week to complete.** We will call when your items are ready for pick up!
- **Die cut orders may take up to two weeks to complete.** We will call when your items are ready for pick up!
- **Children under the age of 16 are not allowed in the resource room.**

Class Registration

1. **Masks are now optional. If you would like a mask, we will provide a disposable one for you!**
2. Temperatures will be checked at the door at every session. **If you have a fever of 99.9° or above, you will not be allowed to attend the training session.**
3. To register for face-to-face classes, please call (256) 551-7016 OR send an email to region1@tcrchildcare.org. Please register at least TWO business days in advance.*
4. **To register for online classes, please follow the instructions found on page 17.**
5. Virtual and in-person attendees are expected to actively participate in ALL training activities and complete pre-assessment and post-assessment tests. **Your camera is required to be on during virtual training sessions.**
6. **CCC reserves the right to cancel training sessions due to lack of registration, as well as COVID-19 diagnosis or exposure. All registered participants will be notified immediately if cancellation occurs.**
7. **Children under the age of 16 are not allowed to attend or stay for training sessions.**
8. CCC training is open to all persons regardless of race, national origin, religion, age, sex, political beliefs, or disability.

*Important Update Regarding Alabama Pathways

On July 1, 2023, Alabama Pathways, also known as the Professional Development Registry (PDR) website went down for transitional maintenance. At this time, it is unclear how long the process will take. During this time, CCC's registration process will revert to how it was prior to the implementation of Pathways, as indicated above. We will also return to issuing physical certificates for in-person training, until further notice.



Learning Legend

DHR Performance Standards Training Areas (DHR Area)		Alabama Pathways Core Knowledge Areas (CKA Area)		Child Development Associate Subject Areas (CDA Area)		Child Care & Development Fund Training Areas (CCDF Area)	
CD	Child Development	CGD	Child Growth and Development	1	Planning a safe and healthy environment to invite learning	1. Prevention and control of infectious diseases (including immunizations) 2. SIDS and safe sleep practices 3. Administration of medication 4. Prevention/response to food allergies 5. Building and physical premises safety, including identifying electrical hazards, bodies of water, and vehicular traffic 6. Shaken Baby Syndrome and head trauma 7. Emergency preparedness and response planning for natural or man-created events 8. Storage of hazardous materials and bio-contaminants 9. Pre-cautions in transporting children 10. First-aid CPR 11. Recognizing and reporting child abuse and neglect 12. Identifying and serving homeless children and their families 13. Promoting the social, emotional, physical, and cognitive development of children, including those related to nutrition and physical activity, using scientifically-based, developmentally appropriate and age appropriate strategies 14. Caring for children in geographic areas with significant concentrations of poverty and unemployment 15. Implementing behavior strategies, including positive behavior interventions and support models that promote positive social and emotional development and reduce challenging behaviors, including reducing expulsions of preschool-aged children for such behaviors 16. Engaging parents and families in culturally and linguistically appropriate ways to expand their knowledge, skills and capacity to be meaningful partners in supporting their children's positive development 17. Understanding early neurological development 18. Using data to guide program improvement 19. Supporting positive development of school-age children 20. Improving the quality of program's and services for infants and toddlers	
LD	Language Development	HSN	Health, Safety and Nutrition	2	Steps to advance children's physical and intellectual development		
PDG	Positive Discipline and Guidance	LEE	Learning Experiences and Enrichment	3	Positive ways to support children's social and emotional development		
HSUP	Health, Safety and Universal Precautions	COA	Child Observation and Assessment (Planning for Individual Needs)	4	Strategies to establish productive relationships with families		
QCCL	Quality Child Care and Licensing	DIV	Diversity	5	Strategies to manage an effective program operation		
CCPF	Child Care Professional and the Family	ICFC	Interaction with Children, Families and Communities	6	Maintaining a commitment to professionalism		
AM	Administration and Management	PPD	Personal and Professional Development	7	Observing and recording children's behavior		
		MA	Management and Administration	8	Principles of child growth and development		
Training Levels				Training Tracks/Target Age Groups			
Basic (B)		Most appropriate for entry level professionals who are new to early childhood and/or school-age care		Infant		Birth to 12 Months	
Intermediate (I)		For professionals who have at least two(2) years experience and 120 hours of training in child development and are moving toward more formal education		Toddler		1 and 2 years old	
Advanced (A)		For professionals who have at least three (3) years of experience and 30 credit hours in child development. Advanced level training focuses on a more through knowledge of developmentally appropriate practice and high effective application and demonstration skills.		Preschool		3 and 4 years old	
				School-Age		5 to 12 years old	
				ALL		Infant, Toddler, Preschool, and School-Age	
Alabama Standards for Early Learning & Development Areas (ASELD Area)				QRIS Rubric Areas (QRIS Area)			
FCE		Family and Community Engagement		1		Curriculum and Instruction	
SED		Social and Emotional Development		2		Screening and Assessment	
SST		Social Studies		3		Family Engagement	
APL		Approaches to Play and Learning		4		Professional Credential	
SEK		Science Exploration and Knowledge		5		Environment	
MET		Mathematical Thinking		6		Program Design	
LLT		Language and Literacy					
CRA		Creative Arts					
PDH		Physical Development and Health					

CCC E-Learning Train & Virtual Classroom

Welcome to Learning on Demand!



New Participants

1. Have your center director send an email to elarning@tcrchildcare.org and request for an account to be created for you. *If you are not currently employed by a facility and are interested in opening your own, you may send the email yourself; however, please be sure to indicate that in your email.* The following information must be included:
 - Your First & Last Name
 - Your Email Address
 - Center Name & Address (if applicable)
 - County
2. Once your account is created, you will receive an email with your login information.
3. Using your username and password, login to the e-learning website: www.ccelearningtrain.com
4. Choose your course, click "Enroll Me", and begin.
5. Once you have completed **all requirements** for a course, download and print your certificate.

Returning Participants

1. Using your username and password, login to the e-learning website: www.ccelearningtrain.com
2. Choose your course, click "Enroll Me", and begin.
3. Once you have completed **all requirements** for a course, download and print your certificate.

Any account inactive longer than 12 months will be deleted. Any account outside of Regions 1 & 8 will eventually be deleted*. If you have issues or questions regarding E-learning, email: elarning@tcrchildcare.org.

During the last month of every quarter, there will be a closing date. This is for our required reporting purposes. The closing date will be posted on the E-learning website every quarter, for your convenience.

Quarter	Quarter Ends
1st	Dec. 31
2nd	Mar. 30
3rd	Jun. 30
4th	Sep. 30

Virtual Classroom



CCC offers live, virtual classes! These classes are offered through our E-learning site: www.ccelearningtrain.com.

Virtual Class Registration Steps

1. **You will need to have an account to participate.** If you do not have one, please follow the steps under **New Participants** on the left of this page to have an account created.
2. Choose the class(es) you would like to register for at least 2 business days in advance.
3. Call (256) 551-7016 OR email region1@tcrchildcare.org with the following information:
 - First & Last Name
 - Phone Number
 - Email Address
3. 15-20 minutes ahead of time, on the day of the class, login to the E-learning site, www.ccelearningtrain.com, and scroll down until you see the folder titled "Virtual Classroom". Click this folder, then click on the class you registered for.
4. Take the preview. It will be available as early as 2 business days in advance of the training.
5. Watch virtual presentation at scheduled date/time.
6. Take the review. *Both preview AND review are required to receive a certificate.*
7. Download and print your certificate!

Please send an email with any comments or suggestions, once you have participated. Thank you!



Business hours are **8AM-4:30PM, Monday-Friday**. Allow 1-2 business days for email responses from the E-learning facilitator. **For E-learning assistance, please call (256) 282-9453.**

*For a map of counties in Regions 1 & 8, please visit: <https://www.tcrchildcarecorporation.org/ccq-quality/>

Online & Virtual Training Opportunities

The following list of titles highlights **some online trainings**. Please login and view the website, www.ccelearningtrain.com, for a complete list of available courses. All classes are *self-enroll* once your account has been created. *Anyone currently registered in the Moodle system can simply click "Enroll me" on a selected course to begin.*

Online Training Opportunities

Title	Level	DHR Area	CDA Area	CKA Area	CCDF Area	ASELD Area	QRIS Area	Training Track
Basics in Child Care (6 hrs.)	Basic	All except AM	1, 2, 3, 4, 6, 7, 8	All except MA	All except 10	ALL	1, 2, 3, 5, 6.9	ALL
CCDF Area 1: Prevention & Control of Infectious Diseases (1 hr.)	Basic	HSUP	1	HSN	1	PDH2a	1	ALL
CCDF Area 2: SIDS & Safe Sleep Practices (1 hr.)	Basic	HSUP	1	HSN	2	PDH2a	1	ALL
CCDF Area 3: Administration of Medication (1 hr.)	Basic	HSUP	1	HSN	3	PDH2a	1	ALL
CCDF Area 4: Prevention/Response to Food Allergies (1 hr.)	Basic	HSUP	1	HSN	4	PDH2a	1	ALL
CCDF Area 5: Building & Physical Premises Safety (1 hr.)	Basic	HSUP	1	HSN	5	PDH2a	1	ALL
CCDF Area 6: Shaken Baby Syndrome & Head Trauma (1 hr.)	Basic	HSUP	1	HSN	6	PDH2a	1	ALL
CCDF Area 7: Emergency Preparedness (1 hr.)	Basic	HSUP	1	HSN	7	PDH2a	1	ALL
CCDF Area 8: Handling & Storage of Hazardous Materials (1 hr.)	Basic	HSUP	1	HSN	8	PDH2a	1	ALL
CCDF Area 9: Transporting Children (1 hr.)	Basic	HSUP	1	HSN	9	PDH2a	1	ALL
CCDF Area 10: Basic First-Aid & CPR* (1 hr.) <i>*This training does NOT certify participants in CPR</i>	Basic	HSUP	1	HSN	10	PDH2a	1	ALL
CCDF Area 11: Recognizing & Reporting Child Abuse & Neglect (1 hr.)	Basic	HSUP	1	HSN	11	PDH2a	1	ALL

Virtual Training Opportunities

Date	Title	Time	Level	DHR Area	CDA Area	CKA Area	CCDF Area	ASELD Area	QRIS Area	Training Track
April—June 2024 <i>(Please register at least TWO business days in advance)</i>										
Monday 4/8/24	Reading Between the Lines	6:30 PM—8:30 PM	I	LD	2, 3, 8	LEE	13,	LLT 1-3	1	Preschool
Tuesday 6/18/24	APT: Sweet Home Alabama	6:30 PM—8:30 PM	B	CD	3	LEE	13,	N/A	N/A	School Age

The virtual course(s) above will be hosted on the CCC E-learning website: www.ccelearningtrain.com. Certificates will be issued via the E-learning website as well.

Training Opportunities

Date	Title	Time	Location	Level	DHR Area	CDA Area	CKA Area	CCDF Area	ASELD Area	QRIS Area	Training Track
Colbert County <i>(Please register at least TWO business days in advance)</i>											
Tuesday 4/2/24	APT: Sweet Home Alabama	6:30 PM— 8:30 PM	NWSCC Bldg. 110 800 George Wallace Blvd. Muscle Shoals, AL 35661	B	CD	3	LEE	13,	N/A	N/A	School Age
Thursday 4/4/24	CCDF Areas 1 & 3: Prevention & Control of Infectious Diseases & Administration of Medication	6:30 PM— 8:30 PM	NWSCC Bldg. 127, Rm. 102 800 George Wallace Blvd. Muscle Shoals, AL 35661	B	HSUP	1	HSN	1, 3	PDH2a	1	ALL
Wednesday 5/8/24	Basics in Child Care	6:30 PM— 8:30 PM	NWSCC Bldg. 127, Rm. 102 800 George Wallace Blvd. Muscle Shoals, AL 35661	B	All except AM	1, 2, 3, 4, 6, 7, 8	All except MA	All except 10	ALL	1, 2, 3, 5, 6.9	ALL
Tuesday 5/14/24	APT: Bringing Books to Life	6:30 PM— 8:30 PM	NWSCC Bldg. 127, Rm. 102 800 George Wallace Blvd. Muscle Shoals, AL 35661	B	CD	2, 3, 8	CGD LEE	13	N/A	N/A	Preschool
Thursday 5/16/24	CCDF Areas 4 & 7 Prevention/Response to Food Allergies & Emergency Preparedness	6:30 PM— 8:30 PM	NWSCC Bldg. 127, Rm. 102 800 George Wallace Blvd. Muscle Shoals, AL 35661	B	HSUP	1	HSN	4, 7	PDH2a	1	ALL
Tuesday 5/21/24	Directors' Roundtable (Directors & FCC/GCC Licensees ONLY)	6:30 PM— 8:30 PM]	NWSCC Bldg. 127, Rm. 102 800 George Wallace Blvd. Muscle Shoals, AL 35661	A	AM, CCPF	4, 5, 6	ICFC, MA	13, 18, 20	N/A	N/A	Director
Tuesday 6/4/24	APT: Stop, Look, And Listen: The Value of Observation	6:30 PM— 8:30 PM	NWSCC Bldg. 127, Rm. 102 800 George Wallace Blvd. Muscle Shoals, AL 35661	B	CD	7	CDA	20	N/A	N/A	Infant/ Toddler
Wednesday 6/12/24	CCDF Areas 2 & 6: SIDS & Safe Sleep Practices & Shaken Baby Syndrome & Head Trauma	6:30 PM— 8:30 PM	NWSCC Bldg. 127, Rm. 102 800 George Wallace Blvd. Muscle Shoals, AL 35661	B	HSUP	1	HSN	2, 6	PDH2a	1	ALL
Cullman County <i>(Please register at least TWO business days in advance)</i>											
Tuesday 4/9/24	I Feel What You're Saying: Developing Expressive and Receptive Language in Young Children	6:00 PM— 8:00 PM	Early Years Preschool 400 Wesley Ave. N Cullman, AL 35058	B	CD, LD	2	CGD, LEE	13	LLT	1	Preschool
Tuesday 4/16/24	CCDF Areas 1 & 3: Prevention & Control of Infectious Diseases & Administration of Medication	6:00 PM— 8:00 PM	Early Years Preschool 400 Wesley Ave. N Cullman, AL 35058	B	HSUP	1	HSN	1, 3	PDH2a	1	ALL
Thursday 5/2/24	CCDF Areas 4 & 7 Prevention/Response to Food Allergies & Emergency Preparedness	6:00 PM— 8:00 PM	Early Years Preschool 400 Wesley Ave. N Cullman, AL 35058	B	HSUP	1	HSN	4, 7	PDH2a	1	ALL
Tuesday 5/7/24	APT-Navigating Challenging Circumstances: What Are Kids Facing Today?	6:00 PM— 8:00 PM	Early Years Preschool 400 Wesley Ave. N Cullman, AL 35058	B	HSUP	1	HSN	4, 7	PDH2a	1	ALL
Tuesday 6/4/24	CCDF Areas 2 & 6: SIDS & Safe Sleep Practices & Shaken Baby Syndrome & Head Trauma	6:00 PM— 8:00 PM	Early Years Preschool 400 Wesley Ave. N Cullman, AL 35058	B	HSUP	1	HSN	2, 6	PDH2a	1	ALL
Tuesday 6/11/24	Good Job!	6:00 PM— 8:00 PM	Early Years Preschool 400 Wesley Ave. N Cullman, AL 35058	B	PDG, QCCL	3, 4	CGD, LEE	13, 15	SED, PDH	5, 6	Infant/ Toddler

Training Opportunities

Date	Title	Time	Location	Level	DHR Area	CDA Area	CKA Area	CCDF Area	ASELD Area	QRIS Area	Training Track
Franklin County <i>(Please register at least TWO business days in advance)</i>											
Thursday 4/11/24	APT: Sweet Home Alabama	6:30 PM— 8:30 PM	New Freedom Daycare 508 Saint Claire St. Russellville, AL 35653	B	CD	3	LEE	13,	N/A	N/A	School Age
Tuesday 4/16/24	CCDF Areas 1 & 3: Prevention & Control of Infectious Diseases & Administration of Medication	6:30 PM— 8:30 PM	New Freedom Daycare 508 Saint Claire St. Russellville, AL 35653	B	HSUP	1	HSN	1, 3	PDH2a	1	ALL
Monday 5/6/24	CCDF Areas 4 & 7 Prevention/Response to Food Allergies & Emergen- cy Preparedness	6:30 PM— 8:30 PM	New Freedom Daycare 508 Saint Claire St. Russellville, AL 35653	B	HSUP	1	HSN	4, 7	PDH2a	1	ALL
Thursday 5/16/24	APT: Exploring Curiosity, Problem Solving and Critical Thinking with PBS Kids	6:30 PM— 8:30 PM	New Freedom Daycare 508 Saint Claire St. Russellville, AL 35653	B	CD	8	CGD, LEE	13	N/A	N/A	Preschool
Thursday 6/6/24	APT: Stop, Look, And Lis- ten: The Value of Observa- tion	6:30 PM— 8:30 PM	New Freedom Daycare 508 Saint Claire St. Russellville, AL 35653	B	CD	7	CDA	20	N/A	N/A	Infant/ Toddler
Lauderdale County <i>(Please register at least TWO business days in advance)</i>											
Tuesday 4/16/24	APT: Sweet Home Alabama	6:30 PM— 8:30 PM	Mars Hill Preschool 698 Cox Creek Parkway Florence, AL 35630	B	CD	3	LEE	13,	N/A	N/A	School Age
Tuesday 5/7/24	APT: Exploring Curiosity, Problem Solving and Critical Thinking with PBS Kids	6:30 PM— 8:30 PM	Mars Hill Preschool 698 Cox Creek Parkway Florence, AL 35630	B	CD	8	CGD, LEE	13	N/A	N/A	Preschool
Tuesday 6/11/24	APT: Stop, Look, And Lis- ten: The Value of Observa- tion	6:30 PM— 8:30 PM	Mars Hill Preschool 698 Cox Creek Parkway Florence, AL 35630	B	CD	7	CDA	20	N/A	N/A	Infant/ Toddler
Lawrence County <i>(Please register at least TWO business days in advance)</i>											
Monday 4/8/24	Finding Peter Pan	6:30 PM— 8:30 PM	Kids Kount 23631 AL Hwy. 24 Trinity, AL 35673	B	CCPF	2, 4	ICFC	13, 20	APL, FCE	N/A	Infant/ Toddler
Monday 5/13/24	Count Me In	6:30 PM— 8:30 PM	Kids Kount 23631 AL Hwy. 24 Trinity, AL 35673	B	CD	1, 2	CGD, LEE	13	MET	N/A	Preschool
Monday 6/10/24	APT: Sweet Home Alabama	6:30 PM— 8:30 PM	Kids Kount 23631 AL Hwy. 24 Trinity, AL 35673	B	CD	3	LEE	13	N/A	N/A	School Age
Limestone County <i>(Please register at least TWO business days in advance)</i>											
Monday 4/15/24	The Guiding Light	6:30 PM— 8:30 PM	Friendship Learning Ctr. 16479 Lucas Ferry Rd. Athens, AL 35611	I	PDG	1, 3	CGD, HSN, LEE	13	SED	5	All
Monday 5/20/24	Promoting Good Eating Habits	6:30 PM— 8:30 PM	Friendship Learning Ctr. 16479 Lucas Ferry Rd. Athens, AL 35611	I	HSUP	1,6,8	HSN	13, 20	PDH	1	Infant/ Toddler
Monday 6/17/24	Making Choices	6:30 PM— 8:30 PM	Friendship Learning Ctr. 16479 Lucas Ferry Rd. Athens, AL 35611	I	PDG	3, 8	CGD	13, 16, 18	SED	1	Preschool

Training Opportunities

Date	Title	Time	Location	Level	DHR Area	CDA Area	CKA Area	CCDF Area	ASELD Area	QRIS Area	Training Track
Madison County <i>(Please register at least TWO business days in advance)</i>											
Thursday 4/4/24	CCDF Areas 1 & 3: Prevention & Control of Infectious Diseases & Administration of Medication	6:30 PM— 8:30 PM	Child Care Central, Huntsville	B	HSUP	1	HSN	1, 3	PDH2a	1	ALL
Saturday 4/6/24	Super Saturday Reading Between the Lines	8:30 AM— 10:30 AM	Child Care Central, Huntsville	I	LD	2, 3, 8	LEE	13,	LLT 1-3	1	Preschool
Saturday 4/6/24	Super Saturday Mother Goose on the Loose	10:30 AM— 12:30 PM	Child Care Central, Huntsville	I	PDG	1, 3	CGD HSN LEE	13	N/A	N/A	All
Monday 4/8/24	AELG Session 1: Introduc- tion	9:00 AM— 11:00 AM	Child Care Central, Huntsville	B	CD	8	CGD	13, 17, 20	N/A	N/A	I/T & Preschool
Monday 4/8/24	AELG Session 2: Observa- tion	12:00 PM— 2:00 PM	Child Care Central, Huntsville	B	CD	7, 8	CGD, COA	13, 17, 18, 20	N/A	N/A	I/T & Preschool
Monday 4/8/24	AELG Session 3: The Role of the Parent and Caregiver	2:00 PM— 4:00 PM	Child Care Central, Huntsville	B	CCPF, QCCL	4, 6	ICFC, PPD	16, 20	N/A	N/A	I/T & Preschool
Wednesday 4/10/24	Basics in Child Care	9:00 AM— 4:00 PM	Child Care Central, Huntsville	B	All except AM	1, 2, 3, 4, 6, 7, 8	All except MA	All except 10	ALL	1, 2, 3, 5, 6, 9	ALL
Wednesday 4/10/24	Trauma Responsive Care Strategies & Practices	6:30 PM— 8:30 PM	Child Care Central, Huntsville	B	CD PDG	3, 8	CGD LEE	13, 14	N/A	N/A	Infant/Toddler
Thursday 4/11/24	Director's ONLY Positive Guidance	1:00 PM— 3:00 PM	Child Care Central, Huntsville	I	AM, HSUP, PDG	1,3	IGD, MA	13, 15	SED	5	Director
Wednesday 4/17/24	Director's Roundtable <i>Director's & Owners ONLY</i>	10:00 AM— 12:00 PM	Child Care Central, Huntsville	A	AM QCCL	4, 5, 6	MA PPD	13, 18, 20	N/A	N/A	Director
Thursday 4/18/24	Finding Peter Pan	6:30 PM— 8:30 PM	Child Care Central, Huntsville	B	CCPF	2, 4	ICFC	13, 20	APL, FCE	N/A	Infant/Toddler
Thursday 4/25/24	The Guiding Light	6:30 PM— 8:30 PM	Child Care Central, Huntsville	I	PDG	1, 3	CGD, HSN, LEE	13	SED	5	All
Thursday 5/2/24	APT Presents: Bringing Books to Life	6:30 PM— 8:30 PM	Child Care Central, Huntsville	B	CD	2, 3, 8	CGD LEE	13	LLT	N/A	Preschool
Tuesday 5/7/24	AELG Session 4: Self- Concept and Emotional Development	9:00 AM— 11:00 AM	Child Care Central, Huntsville	B	CD, PDG	3, 8	CGD, DIV	13, 15, 17, 20	N/A	N/A	I/T & Preschool
Tuesday 5/7/24	AELG Session 5: Social Development	12:00 PM— 2:00 PM	Child Care Central, Huntsville	B	CD, PDG	3, 8	CGD	15, 17, 20	N/A	N/A	I/T & Preschool
Tuesday 5/7/24	AELG Session 6: Language and Literacy Development	2:00 PM— 4:00 PM	Child Care Central, Huntsville	B	LD	2, 8	CGD	17, 20	N/A	N/A	I/T & Preschool
Thursday 5/9/24	Director's ONLY APT: The Power of Deci- sion Making	1:00 PM— 3:00 PM	Child Care Central, Huntsville	B	AM QCCL	5, 6	PPD MA	18	N/A	N/A	Director
Monday 5/13/24	Promoting Good Eating Habits	6:30 PM— 8:30 PM	Child Care Central, Huntsville	I	HSUP	1,6,8	HSN	13, 20	PDH	1	Infant/Toddler
Tuesday 5/14/24	APT-Navigating Challenging Circumstances: What Are Kids Facing Today?	6:30 PM— 8:30 PM	Child Care Central, Huntsville	B	HSUP	1	HSN	4, 7	PDH2a	1	ALL

Training Opportunities

Date	Title	Time	Location	Level	DHR Area	CDA Area	CKA Area	CCDF Area	ASELD Area	QRIS Area	Training Track
Madison County (continued) <i>(Please register at least TWO business days in advance)</i>											
Wednesday 5/15/24	Trauma Responsive Care Strategies & Practices	6:30 PM—8:30 PM	Child Care Central, Huntsville	B	CD PDG	3, 8	CGD LEE	13, 14	N/A	N/A	Infant/Toddler
Tuesday 5/21/24	CCDF Areas 4 & 7 Prevention/Response to Food Allergies & Emergency Preparedness	6:30 PM—8:30 PM	Child Care Central, Huntsville	B	HSUP	1	HSN	4, 7	PDH2a	1	ALL
Monday 6/3/24	AELG Session 7: Physical Development	9:00 AM—11:00 AM	Child Care Central, Huntsville	B	CD, HSUP	2, 8	CGD, HSN	13, 20	N/A	N/A	I/T & Preschool
Monday 6/3/24	AELG Session 8: Cognitive Development	12:00 PM—2:00 PM	Child Care Central, Huntsville	B	CD	2, 8	CGD	13, 17, 20	N/A	N/A	I/T & Preschool
Monday 6/3/24	AELG Session 9: Putting it All Together for Alabama's Children	2:00 PM—4:00 PM	Child Care Central, Huntsville	B	CCPF, QCCL	4, 6	ICFC, PPD	16, 18, 20	N/A	N/A	I/T & Preschool
Tuesday 6/4/24	CCDF Areas 2 & 6: SIDS & Safe Sleep Practices & Shaken Baby Syndrome & Head Trauma	6:30 PM—8:30 PM	Child Care Central, Huntsville	B	HSUP	1	HSN	2, 6	PDH2a	1	ALL
Thursday 6/6/24	Good Job!	6:30 PM—8:30 PM	Child Care Central, Huntsville	B	PDG, QCCL	3, 4	CGD, LEE	13, 15	SED, PDH	5, 6	Infant/Toddler
Monday 6/10/24	Director's ONLY Collaborative Leadership	1:00 PM—3:00 PM	Child Care Central, Huntsville	I	AM PDG	4, 5, 6	ICFC MA	13, 16, 18	FCE 1-3	3	Director
Tuesday 6/11/24	The Guiding Light	6:30 PM—8:30 PM	Child Care Central, Huntsville	I	PDG	1, 3	CGD, HSN, LEE	13	SED	5	All
Wednesday 6/12/24	Basics in Child Care	9:00 AM—4:00 PM	Child Care Central, Huntsville	B	All except AM	1, 2, 3, 4, 6, 7, 8	All except MA	All except 10	ALL	1, 2, 3, 5, 6, 9	ALL
Wednesday 6/19/24	Trauma Responsive Care Strategies & Practices	6:30 PM—8:30 PM	Child Care Central, Huntsville	B	CD PDG	3, 8	CGD LEE	13, 14	N/A	N/A	Infant/Toddler
Morgan County <i>(Please register at least TWO business days in advance)</i>											
Thursday 4/11/24	Reading Between the Lines	6:00 PM—8:00 PM	Kids Kastle Learning Center 112 Corsbie St. SW Hartselle, AL 35640	I	LD	2, 3, 8	LEE	13	LLT 1-3	1	Preschool
Tuesday 5/6/24	Mother Goose on the Loose	6:00 PM—8:00 PM	Kids Kastle Learning Center 112 Corsbie St. SW Hartselle, AL 35640	I	PDG	1, 3	CGD HSN LEE	13	N/A	N/A	All
Monday 6/10/24	APT: Stop, Look, And Listen: The Value of Observation	6:00 PM—8:00 PM	Kids Kastle Learning Center 112 Corsbie St. SW Hartselle, AL 35640	B	CD	7	CDA	20	N/A	N/A	Infant/Toddler
Winston County <i>(Please register at least TWO business days in advance)</i>											
Tuesday 4/25/24	APT: Sweet Home Alabama	6:00 PM—8:00 PM	Seymour Bevell Daycare 26611 Hwy. 195 N Double Springs, AL 35553	B	CD	3	LEE	13,	N/A	N/A	School Age
Thursday 5/23/24	APT: Exploring Curiosity, Problem Solving and Critical Thinking with PBS Kids	6:00 PM—8:00 PM	Seymour Bevell Daycare 26611 Hwy. 195 N Double Springs, AL 35553	B	CD	8	CGD, LEE	13	N/A	N/A	Preschool
Tuesday 6/13/24	APT: Stop, Look, And Listen: The Value of Observation	6:00 PM—8:00 PM	Seymour Bevell Daycare 26611 Hwy. 195 N Double Springs, AL 35553	B	CD	7	CDA	20	N/A	N/A	Infant/Toddler

Child Care Central, Region 1
2006 Franklin St. SE, Suite 103
Huntsville, AL 35801
(256) 551-7016
region1@tcrchildcare.org

NONPROFIT
U.S. POSTAGE PAID
PERMIT NO. 205
Sylacauga, AL

Counties of Service

Colbert, Cullman,
Franklin, Lauderdale,
Lawrence, Limestone,
Madison, Morgan
Winston

www.tcrchildcarecorporation.org



CCC, a division of TCR Child Care Corporation, is provided through a contract with the Alabama Department of Human Resources.



Closure Dates

Monday – May 27, 2024
Memorial Day



Come Join Us On:

Facebook: <https://www.facebook.com/Child-Care-Central-104390861401264>

Instagram: <https://www.instagram.com/childcarecentralccc/>

Pinterest: <https://www.pinterest.com/childcarecentral/>

YouTube: https://www.youtube.com/channel/UCTCdrCWDhRVDsx_bWZ5r0IQ



Severe Weather Policy

In cases of severe weather, CCC will contact all providers who are registered for scheduled training sessions by phone as soon as we make the decision to cancel the session (when possible).

It is very important to give your correct phone number, so that we can reach you in case of cancellation.