

CCC HUNTSVILLE

REGION 1

Have a Sparkling New Year!



Special Interest Points:

- AELG: Alabama Early Learning Guidelines
- CPR & First Aid Training
- Directors' Roundtable
- ITSN: 1st Annual Infant Toddler Conference

Inside this Issue:	
CCC Huntsville Staff	2
College Updates	3
CCEP Training	5
Infant Toddler Specialist Network Training	6
Alabama's Special Needs Childcare Subsidy	7
APT Training & Resource Information	8
Kids Korner & STEAMing	9
Infant/Toddler Track	10
Preschool Track	11
School-Age Track	12
Director Track	13
Training for ALL Tracks	14
Building Up for Quality	15
Resource Room & Registration Policies	16
Learning Legend	17
CCC E-Learning Train & Virtual Classroom	18
Online & Virtual Training Opportunities	19
Training Opportunities	20

Infant Toddler Specialist Network: 1st Annual Conference

Save the Date!

1st Annual Infant Toddler Conference

January 27, 2024
UA Bryant Conference Center
face-to-face and virtual option



For detailed information, see page 6.

Directors' Roundtable



This collaboration provides a space for leaders of the early childhood education community to come together and share information and connect through roundtable discussions. We strive to foster a professional community that supports quality improvement in family childcare, group childcare, childcare centers, and preschools. Directors from a wide range of early childhood programs participate in facilitated meetings to share concerns, engage in problem-solving, and engage in peer learning opportunities and training on topics of mutual interest. This training session is worth 2 hours of credit, and is for **acting directors and FCC/GCC licensees ONLY**. Light refreshments including coffee, tea, and pastries will be served.

Date: Wednesday, January 17
Time: 10AM-12PM

Location: CCC Huntsville Office

To register, please call us at (256) 551-7016.

AELG: Alabama Early Learning Guidelines

ALABAMA EARLY LEARNING GUIDELINES



ALABAMA DEPARTMENT OF HUMAN RESOURCES

The Alabama Early Learning Guidelines were developed by DHR to promote continuity of high quality care and learning for children ages 0-5. The AELG course is worth 18 hours of credit, and will consist of readings, activities, and discussions that will be a guide for understanding child development and learning and for implementing best practice in order to prepare children for success in school and in life.

This course will be given at the main office in Huntsville. **If you have previously taken the online OR face-to-face AELG course, you will not receive credit again.**

January 24

1. Introduction*, 9-11AM
2. Observation, 12-2PM
3. The Role of the Parent & Caregiver, 2-4PM

February 21

4. Self-Concept/Emotional Development, 9-11AM
5. Social Development, 12-2PM
6. Language & Literacy Development, 2-4PM

March 6

7. Physical Development, 9-11AM
8. Cognitive Development, 12-2PM
9. Putting it All Together for Alabama's Children, 2-4PM

**ALL participants must attend the Introduction session in order to attend other sessions. It is a required prerequisite for all other sessions.*

To register, please call CCC at (256) 551-7016.

CPR & First Aid Training

Anna McCay, RN, of Healthy Child Care Alabama will be offering CPR training at the CCC Huntsville office from **9AM-12:30PM** on the following days:

Thursday, January 11
Tuesday, February 20
Monday, March 4

To register, please call Anna at (256) 533-8711.

Child Care Central Staff

Child Care Central is proud to have a team of diverse and dynamic staff with unique skills, talents, and backgrounds. Meet our CCC Huntsville staff and resource room personnel below!

Program Director, Sabrina Robinson



CCC Huntsville Staff



Lindsai Green Robinson
Office Manager



Kimberly Keeton
Trainer/ Early Childhood Specialist



Julia Martin
Trainer/ Early Childhood Specialist



ReKeya Patterson
Trainer/ Early Childhood Specialist



Stacey Robison
Trainer/ Early Childhood Specialist



Kathryn Townsend
Infant/Toddler Specialist



Christine Wright
Trainer/ Early Childhood Specialist

Part-time Staff



Jeff Robison
*E-Learning Facilitator/
Online Specialist*



Avery Danielowicz
*Resource Specialist,
Northwest Shoals Community College*

College Updates



Northwest Shoals COMMUNITY COLLEGE

ATTENTION! FUTURE TEACHERS

CONSIDER A CAREER IN CHILD DEVELOPMENT.

Start your career to becoming a teacher or child care provider by contacting NW-SCC Child Development instructor Susie Tverberg.



N
Northwest Shoals
Child Development

Susie Tverberg
Child Development Instructor
256-331-5450
laura.tverberg@nwsc.edu



COLLEGE OF
EDUCATION
ATHENS STATE UNIVERSITY

Early Childhood DEPARTMENT

OFFERING TEACHER AIDE CERTIFICATES!

By taking just 3 courses, your career path can lead to a position such as an Auxiliary Teacher in a Pre-K Program and/or CDA.

EARN YOUR CERTIFICATE IN JUST ONE SEMESTER!

YOUR CONTACT
FOR MORE INFORMATION

Dr. Darlene Turner-White
(256) 216-6611 | Darlene.Turner-White@athens.edu

The T.E.A.C.H. (Teacher Education and Compensation Helps) Early Childhood® Alabama Scholarship is for individuals who are working as child-care and pre-school teachers, directors, and family child care home providers in a Department of Human Resources (DHR) licensed child care or First-Class Pre-K program that is willing to sponsor the recipient.

The program provides the opportunity for individuals currently working in the early childhood field to take coursework to increase their knowledge and skills by giving them access to early childhood credentials and a college degree. More information can be found at <https://alabamapartnershipforchildren.org/our-work/t-e-a-c-h/>.

Contact: Dr. Johnnie Lundin, 256-216-6618

Email: Johnnie.Lundin@athens.edu

McCain Hall, Room 222

Program Contact

Dr. Elizabeth Pruett, Elementary and Early Childhood Studies
McCain Hall, Room 214

256-216-6631

Elizabeth.Pruett@athens.edu

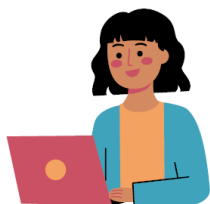
College Updates & Scholarship Information



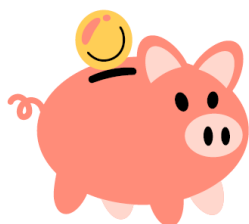
100% Online

Earn your short-term certificate and degree online.

All classes are available online. Complete your 120 required clock hours for CDA training in one semester with three CHD courses.



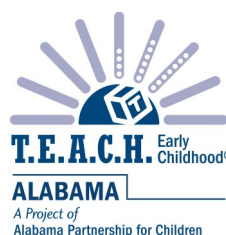
Scholarships are available to assist you in obtaining your degree!



Scholarships

Are you already working with young children?

You may be eligible for a scholarship! Find out more about the Leadership in Child Care Scholarship or the T.E.A.C.H. Scholarship



The A.A.S. in Child Development at Wallace State Community College is accredited by the Commission on Early Childhood Higher Education Programs of the National Association for the Education of Young Children. The accreditation term runs from March 2021 until March 2028.

NAEYC
1401 H Street NW, Suite 600
Washington, DC 20005
800.424.2460, Ext 8007



T.E.A.C.H. Early Childhood® ALABAMA is a scholarship program that was developed to increase the level of education and effectiveness of early learning professionals by make the education process more affordable, increasing wages, and reducing staff turnover rates. Scholarships are currently offered for the CDA (Child Development Associate) Assessment Fee, Associates Degrees in Child Development and Early Care and Education and Bachelor Degrees in Child Development and Early Education.

Contact: Michelle Raybon at (334) 271-0304 or email at mraybon@smartstartalabama.org



Social Media | Contact



Like and follow Wallace State Child Development on Facebook



Scan here for more about WSCC's Child Development Program

www.wallacestate.edu/childdevelopment

Contact Dr. Marcie Robinson
marcie.robinson@wallacestate.edu
(256) 352-8383

Easily Apply

Applications will be accepted August 1st through November 1st for Spring semester admission. Applications received after November 1st will be considered on a space available basis.



Scan here to begin your application at WSCC

www.wallacestate.edu/register-now/index.html



Scan here for more information about the Child Development program application process

www.wallacestate.edu/programs/health-division/child-development/chdapp.html



www.wallacestate.edu

The Leadership in Child Care Scholarship

This scholarship is designed for the eligible recipient to obtain a Child Development Associate (CDA) plus Assessment Fee; Short-Term Certificate; Certificate, or Associate in Applied Science/Technology Degree in Child Development/ Early Care and Education studies at a designated institution in the Alabama Community College System. Eligible recipients can also obtain a Bachelor of Science Degree in Early Childhood Education at Athens State University.

Contact: Virginia Frazer at (334) 293-4552 or email at virginia.frazer@accs.edu

CCEP Training



Child Care Enhancement With a Purpose Community Trainings



January-March 2024

The Proactive Classroom

"Experience creates Expectation which alters Perception" -PITC. Young children require a multitude of experiences as they learn, grow and develop in their early years. Early childhood educators and caregivers possess the critical role of ensuring that these experiences are rich and impactful for all children in group care. The Proactive Classroom will give caregivers an opportunity to explore developmentally-appropriate practices that promote respectful classroom management. Participants will reflect on challenging behaviors and their impacts on relationships with the children. Participants will discuss the importance of experiences on early development, distinguish the differences between being proactive versus reactive, and brainstorm ideas for being more proactive in their own practices and programs.

Target: All
DHR: CD, LD, PDG, QCCL
CKA: CGD, COA, HSN, ICFC, LEE, PPD
CDA: 1, 2, 3, 4, 7, 8
CCDF: 13, 15, 16, 17, 18, 20
Training Level: Basic



Space is limited, and pre-registration is REQUIRED no later than 3 days before training date.

Madison Co.— Thursday, February 8th
 UCP Huntsville 1856 Keats Dr. NW
6:00-8:00 p.m.

Please contact Michala Steele at 256.859.4900 or by email at msteele@ucphuntsville.org to register.

Cullman Co.— Thursday, January 4th
 Heritage Learning Ctr., 1634 Lee Avenue SW, Cullman, **6:00-8:00 p.m.**

DeKalb Co.— Monday, March 4th
 Fort Payne CDC, 651 Wallace Ave. NE, Fort Payne, **6:00-8:00 p.m.**

Morgan Co.— Tuesday, January 2nd
 First Baptist Church Decatur, 123 Church Street NE, Decatur, **6:00-8:00 p.m.**

Marshall Co.— Thursday, February 1st
 Guntersville CDC, 1648 O'Brig Ave., Guntersville, **6:00-8:00 p.m.**

Jackson Co.— Monday, February 26th
 Impact Center, 23123 John T. Reid Pkwy, Scottsboro, **6:00-8:00 p.m.**

Please contact Anna Grace Whaley at 256.859.4900 or email her at awhaley@ucphuntsville.org to register.

Lauderdale Co.—Thursday, March 21st
 Bright Beginnings CDC
1031 Pine St., Killen
6:30-8:30 p.m.

Lawrence Co.— Tuesday, February 20th
 Kids Kount 23631 AL-24, Trinity
6:30-8:30 p.m.

Limestone Co.— Thursday, March 7th
 Athens Recreation Center
21821 Sportsplex Loop, Athens
6:00-8:00 p.m.

Marion Co.— Wednesday, February 28th
 Winfield Senior Center
300 Community Street, Winfield
6:00-8:00 p.m.

Franklin Co.— Thursday, March 14th
 Bishop Center
201 Ash Ave. South, Russellville
6:00-8:00 p.m.

Colbert Co.— Thursday, February 22nd
 Helen Keller Library
511 N. Main St., Tuscumbia
6:00-8:00 p.m.

Winston Co.— Tuesday, March 26th
 Seymour Beville Daycare
26611 Hwy. 195 N., Double Springs
6:30-8:30 p.m.

Please contact Tiffany Simon at 256.859.4900 or by email at tsimon@ucphuntsville.org to register.

Infant Toddler Specialist Network Training

**Inaugural Infant Toddler
Specialist Network
Conference**

**Connections: The
Power Behind
High- Quality
Caregiving**



Presented by:



JANUARY 27, 2024

IN-PERSON OR ONLINE

**BRYANT CONFERENCE CENTER
TUSCALOOSA, AL**

Registration Links:

(If you wish to register by phone or have questions please contact registration services at 205-348-3000)

In-Person



Virtual



Exhibitor/ Sponsor



Alabama's Special Needs Childcare Subsidy

ALABAMA'S NEW SPECIAL NEEDS CHILDCARE SUBSIDY

Facts for Service Providers to Share with Families

Frequently Asked Questions (FAQs)

"DOES MY CHILD ALREADY HAVE TO BE IN DAYCARE?"

No, but please begin looking.

Eligibility does not guarantee childcare placement. The parent is responsible for identifying and enrolling their child in a DHR licensed childcare center or family/group home.

"IS THERE AN AGE LIMIT?"

No, as long as they are enrolled in before/after care or summer care at a licensed daycare center.

"ARE THERE ANY INCOME OR EMPLOYMENT REQUIREMENTS?"

No, the child's service plan (IEP or IFSP) is what qualifies them.

IS THERE AN APPLICATION ONLINE?

No, please **HAVE PARENTS** contact Melissa Anderson to apply!



About the Subsidy

Financial assistance is now available for qualifying Alabama families of a child with special needs to attend quality, inclusive childcare programs statewide. To qualify, the child must be receiving services (IFSP, IEP, or outpatient services provided AT THE DAYCARE CENTER for speech, occupational or physical therapy).

To learn more, or to determine eligibility, contact Melissa Anderson. Statewide Childcare Enhancement with a Purpose Project Manager at 256-859-4900.

Please send all service plans by email to manderson@ucphuntsville.org or by fax at 256-859-4332.

APT Training & Resource Information

APT's Winter 2024 Facilitated Classes

Registration for APT's Winter 2024 facilitated classes opens **Monday, December 11, 2023**. Facilitated winter online courses begin on **Monday, January 8, 2024**.

Winter 2024 Training Titles

- AELG Online (Alabama Early Learning Guidelines)
- CDA Credential: An Introduction
- Kindergarten Readiness: Approaches to Play for Preschoolers
- STEM for the Preschool Classroom
- Exploring Literacy Development with PBS KIDS!

Scan the QR code below or [click here](#) to access information about APT's winter facilitated course registration.



APT's On-Demand Course Catalog

On-demand 2-hour trainings are always available on our website @ aptlearnonline.org.

Scan the QR code below to access APT's on-demand training catalog.



Resource Room Contact Information

Child Care Central Huntsville
2006 Franklin Street, Suite 103
Huntsville, AL 35801
(256) 551-7016

Hours of Operation: Monday—Friday: 8AM - 4PM

Child Care Resource Center
Athens State University
Chasteen Hall, Room 105
161 North Clinton St.
Athens, AL 35611
(256) 551-7016

Hours of Operation: Please call number above for hours of operation OR to schedule a visit!

Child Care Resource Center
Northwest-Shoals Community College
Muscle Shoals Campus
800 George Wallace Blvd.
Muscle Shoals, AL 35661
(256) 375-4974

Hours of Operation: Please call number above for hours of operation OR to schedule a visit!

Child Care Resource Center
Wallace State Community College
Tom Beville Health Education Bldg. Room 419
(4th Floor)
801 Main Street NW
Hanceville, AL 35077
(256) 551-7016

Hours of Operation: Please call number above for hours of operation OR to schedule a visit!

Activity Pack

If you would like an activity pack mailed or emailed to you, please give us a call at (256) 551-7016 or email us at region1@tcrchildcare.org!

Themes this quarter:



January – Wintry Weather
February – Sweet Hearts
March – Hop to It!



The Activity Pack includes classroom ideas, fine & gross motor skills ideas, center & circle time ideas, songs, finger plays, games, and more!

Kids Korner & STEAMing

Kids Korner

January 2024

Infant/Toddler: The Very Hungry Caterpillar's First Winter

It's caterpillar's first winter! From the smell of fresh cookies from the oven to the sounds of birds chirping on a snowman, toddlers will discover snowy days are chilly, but full of fun.

Preschool: Stone Soup

Strangers come to town and help the villagers create soup from a stone by encouraging them to share with one another. Sharing and caring for others are one of the most important qualities we humans possess.

February 2024

Infant/Toddler: I Love You to the Moon and Back

The sun rises, and a bear and cub begin their day together. They splash in the water, climb mountains, watch the colorful lights in the shimmering sky, and play with friends. They show their love for each other by touching noses, chasing each other, and, of course, hugging and snuggling before bed. A sweet, gentle rhyme, perfect for sharing with a special little one.

Preschool: Plant a Kiss

Have you ever planted a kiss? What do you think would happen if you did? In Amy Rosenthal's simple story called, "Plant a Kiss" children learn that the best thing to do with love is to share it! You can't spend it all so you must share it, and when you do it only grows! Kindness is such an important thing for children to learn, even more so in the world in which we currently live. One small act of love blooms into something bigger and more dazzling than Little Miss could have ever imagined in this epic journey about life, kindness, and giving.

March 2024

Infant/Toddler: Ten Little Farm Friends

Join the baby animals on their journey around the farm in this charming book. Young readers will delight in the colorful pages as they watch the die-cut farm animals decrease from 10 to 1 with each turn of the page.

Preschool: Frog on a Log

In this silly read-aloud story with funny rhymes and hilarious illustrations, Frog does not want to sit on a log! But Cat tells him that's where he belongs. Doing his best to find an alternative place to sit, Frog asks Cat a whole lot of questions. For every answer Cat has, Frog has another question, until he finds out what dogs sit on!

STEAMing

January 2024

Snowball Balance

Snowball Balance is a super easy great fine and balancing gross motor winter STEAM activity for toddlers and preschoolers! A great way to banish boredom on those long cold days!

February 2024

Push & Pull Painting

Let's investigate the concepts of force and motion with a fun and engaging hands-on STEAM activity. Force is the energy it takes to do work and motion is the change of position of an object because of the force that is applied. We will explore the force of push and pull as we try to move paint to create a unique abstract work of art.

March 2024

Light and Shadows

A shadow experiment is a fun way to teach preschool kids about shadows. Many early learning science curriculum has a unit on shadows and light. You can use shadow activities to show kids how light moves and changes throughout the day.

*Call (256) 551-7016 to request a reader for Kids Korner or a kit for STEAMing.
Available to ALL counties in Region 1. First come, first served!*

Infant/Toddler Track

Training sessions offered this quarter:

APT Presents: Stepping Stones: Developmental Milestones from Ages 0-24 Months

Infants and toddlers learn and grow quickly, reaching new frontiers in growth and learning every day! This training covers the physical, emotional and cognitive developmental milestones that young children typically develop in the first two years of life.

Guiding Choices

As young children develop autonomy, they will experiment with limits to establish a sense of self, and discover what is appropriate behavior. It is possible to help young children fulfill our expectations while promoting their autonomy. When toddlers can make positive choices, these opportunities encourage their cooperation, help them to focus on tasks and teach them decision-making skills. Offering choices to young children is not only empowering for them, but it also improves their ability to make choices and stick with them. This training will focus on how to empower and assist toddlers in making positive choices so they can establish and maintain self-control.

Literacy Boxes for Babies and Toddlers

Literacy starts early! Have you ever wondered how you were supposed to help infants and toddlers acquire literacy skills when they can't even read? Come learn how to promote early literacy skills by creating a literacy toolkit that you can use with all of your little ones. Learn how to interact and engage with young children and watch for signs so you know when to offer more support as they grow.

Making Positive Connections for Positive Guidance

Do you have those children who like to be next to you all the time? Do you have a hard time leaving the classroom or passing a child to another caregiver without a behavior concern? Come to this class to learn techniques on how to help infants and toddlers to manage their emotions. This class will involve using baby dolls in activities. Come ready to explore.

Supporting Babies & Toddlers on Their Path to Resilience

The Second session of the series on trauma-responsive care begins with exploring how trauma may influence infants and toddlers. Participants will unpack why the experience of trauma for babies and toddlers can have a significant influence on their development. This session will also explore the concepts of risk and protective factors, as well as resilience. They will examine specific within-child and external protective factors and reflect on how to promote and strengthen each protective factor for babies and toddlers to foster their resilience.



Preschool Track

Training sessions offered this quarter:

APT: More than 1, 2, 3...What is Early Numeracy?

Through engaging in hands-on activities, participants will learn that early numeracy is more than counting. This 2-hour training will provide ideas and concepts that support children as they explore patterns, problem solving and estimation while utilizing PBS KIDS resources and children's books.

Beauty is in the Eye of the Beholder

As early childhood professionals, we need to understand the importance of beauty in the lives of young children. The role of beauty in human lives as described by Abraham Maslow, Howard Gardner, and Ruth Bendler is addressed. Aspects of the Reggio Emilio approach is presented as an example of an early childhood program that focuses on beauty in the environment. Suggestions for fostering sensitivity to aesthetics provide guidance in helping to provide a more pleasing environment. Practical and easy-to-implement ideas help adults encourage children to recognize and experience beauty in their daily lives.

I Can Relate

Preschool teachers, this one is for you. Do you know how to connect with other teachers and professionals? Teachers, do you ever feel like you are on your own? Often, teachers feel like they must face the struggles and even the successes of teaching alone. That is not the case! This class will focus on teaching you ways that you can reach out and relate and share professionally with others. One of the greatest resources teachers have is each other. Come learn how to use that to your advantage.

Who Needs the Mess? Family Style Meals

This training is designed to introduce family-style meal service and help teachers consider ways to successfully transition to family-style meal service in their classrooms.



School-Age Track

Training sessions offered this quarter:

APT Presents: Innovative Inventors

In this 2-hour training, participants will learn about different people who have created interesting inventions. We will explore children's books and PBS KIDS resources that can be used to teach children about these inventors, what they created, and how their creations made life different. This training will also address how children can be encouraged to be innovative and create something new of their own.

Feel the Power of Positivity! Promoting a Positive Mindset to Achieve Positive Outcomes

Students and teachers alike will benefit when you boost the positive energy of your afterschool or childcare program. Join us as we discuss strategies for creating a culture of positivity among students and staff. Talking points will include the benefits of shifting from punishment to positive guidance, the importance of highlighting student and staff successes, and ideas for program activities that inspire positive behavior, cooperative learning, and positive peer-to-peer interactions.

Understanding the Whole Child: The Basis for Environmental Design

School-age environments should reflect the interests, abilities, and needs of the children enrolled. Children need to feel a sense of belonging. When staff members are consistently observing and planning with children, they create exciting and challenging environments. This training will present a brief background on the foundations of child development to support your understanding of observations which are essential to designing a quality school-age environment.



Director Track

Training sessions offered this quarter:

Creating Language and Literacy Centers

Join us for this director's training to provide information on the importance of creating language and literacy centers and how to incorporate them into your early childhood classrooms.

Director's Roundtable

This collaboration provides a space for leaders of the early childhood education community to come together and share information and connect through roundtable discussions. We strive to foster a professional community that supports quality improvement in family childcare, group childcare, childcare centers, and preschools. Directors from a wide range of early childhood programs participate in facilitated meetings to share concerns, engage in problem-solving, and engage in peer learning opportunities and training on topics of mutual interest.

Focusing on Families: Building Partnerships

Childcare programs revolve around many relationships sustained through communication, organization and cooperation between the director, staff members and the families they serve. To cultivate those relationships into true partnerships, each staff member and family must be committed to working together sharing expectations, goals, strengths, and respecting everyone's differences. This training will focus on strategies a director may employ to encourage positive connections between the staff and the families of the children in their care.

Making Happy Happen

Directors will be able to help teachers understand specific characteristics or events in a child's life that contribute the most toward their resilience. When you can help children develop resiliency, you are giving them an essential life skill that will allow them to cope with challenges, be more positive, and develop a sense of self-confidence. All of these components are essential to being happy.

Speaking the Language of Conscious Discipline

Dr. Becky Bailey teaches, "Discipline isn't something you do to children, it's something you develop within them." It is important for Directors and their staff to understand that disciplining children and teaching children are the same act. We will explore how to change our mindset of discipline, so we can model and teach children how to behave.



Training for ALL Tracks

Training sessions offered this quarter:

Basics in Child Care

Being an early childhood educator requires you to be willing to wear many hats. As a new educator, remember that your job description may change on a daily basis. As an early childhood educator, you will be challenged to find new experiences to share with children. Basics in Child Care will guide educators through six fundamental areas of early childhood development to prepare them for caring for children, to be knowledgeable of child development, resourceful in planning activities, skilled in guiding behavior, and able to maintain healthy environments.

*To meet the requirements given for facilities participating in the Child Care Subsidy Program, we offer CCDF Areas together in 2 hour training sessions. CCDF 9 is available via our E-learning site. **Some sessions are available only every other quarter.***

CCDF Areas 1 & 3: Prevention & Control of Infectious Diseases/Administration of Medication

Daycares and preschools sometimes have a reputation for being “germ factories.” That is to say, little people are often sick. As providers, we would love to avoid the sniffles, the fevers, and other discomforts associated with childhood illnesses. We will look at how to keep our children as healthy as possible.

CCDF Areas 2 & 6: SIDS & Safe Sleep Practices/Shaken Baby Syndrome & Abusive Head Trauma

This training will provide an overview of reducing the risk of sudden infant death syndrome (SIDS), using safe sleep practices for child care settings, identifying and preventing shaken baby syndrome.

CCDF Areas 4 & 7: Emergencies Due to Food & Allergic Reactions/Emergency Preparedness

We will look at the standards that pertain to programs developing contingency plans for emergencies or disaster situations when it may not be possible or feasible to follow standard or previously agreed upon emergency procedures. We will also look at how to prepare and care for children with food allergies.

CCDF Areas 5 & 8: Building & Physical Premises Safety/Handling & Storage of Hazardous Materials

“Children need to be safe in order to learn and develop their full potential... because young children like to explore, consistent safety practices...prevent children from getting into dangerous situations.” - National Center on Early Childhood Quality Assurance. This training will review and observe potential health and safety hazards. We will also identify strategies to prevent injuries in any environment.

CCDF Areas 10 & 11: Child Abuse & Neglect/First Aid

In this training, participants will learn how federal legislation lays the groundwork for state laws on child maltreatment by identifying a minimum set of actions or behaviors that define child abuse and neglect, and how to identify and develop skills they need to understand in meeting a child’s emotional, physical, and developmental needs. This training will also equip participants with a basic knowledge of first aid and skills to help with sick or injured children in their care that is mandated by state law.

This training does not cover CPR.

How to Talk to Parents

Effective communication makes transitions throughout the setting smoother. It paves the way for open feedback where parents and teachers will feel comfortable raising concerns with their child, knowing it will be heard and addressed in a comfortable & safe environment. When working together as partners, it’s been found that parents and teachers communicate more effectively, develop stronger relationships with one another and develop skills to support children’s behaviors and learning.

Nursery Rhyme Crime Escape Room

You will be in the land of Nursery Rhymes. This Escape Room will transport you to a land where the characters of Nursery Rhymes are walking and talking, real-living beings. However, something is happening to them. One by one, they are all disappearing and only you can stop it. Can you save the missing characters? During this training, you will explore the lost art of nursery rhymes.

Stonework Play—Telling Stories with Stones

Why are rocks or stones so special? “Stones are a kinesthetic medium, never fixed in their place or meaning, the ground an endless canvas, and hands the brushes that move them.” -*Diana Suskind*

Rocks can enrich the imagination of a child. Rocks or stones, pebbles, gravel are appealing to children. Fascinated by their size, shape, texture, and color children can gather them, sort them, and create whatever they want with them.

Gathering these natural treasures, a child can construct any story, render it on paper, narrate it in words, then share it with others. Experiencing this process, providers will play with stones and express a story of their own.

Building Up for Quality

The purpose of the Building Up for Quality initiative is to reach out to early childhood education directors with the following questions:

1. What do you think your teachers might need?
2. How can we build up your teachers, and not tear them down?

We will work side-by-side with center directors and classroom teachers. The director will give CCC staff a professional development plan for their staff. We will then prepare for aiding the classroom teachers and building them up for higher quality services. CCC staff will visit and observe classrooms, as requested by directors. The teacher will be given a 2-question evaluation. After observing the classroom, CCC staff will demonstrate/model appropriate classroom behavior/management techniques. The teacher will then be given the opportunity to demonstrate what they have learned. CCC staff will continue to work with the teacher as they, along with the director and teacher, feel necessary. The evaluation will be given again at the end of the session. **Each session will count as a 1-hour training for the classroom teacher, and they will receive a professional development certificate that meets DHR Performance Standards.**

To request a Building Up for Quality Training for your teacher, please call us at (256) 551-7016.



Resource Room & Registration Policies

Due to **COVID-19**, CCC has made several policy updates to our resource room usage, as well as our registration policies, to ensure the health and safety of CCC staff, as well as childcare providers we serve.

These changes are in effect until further notice. Thank you for helping us stop the spread!

Resource Room

- You **MAY NOT** enter if you are sick or showing symptoms of COVID-19. **NO EXCEPTIONS.**
- **Masks are now optional.** If you would like a mask, we will provide a disposable one for you!
- **Please use hand sanitizer upon entry AND exit.**
- **The resource room is open 8AM—3:30PM, Monday—Friday. Appointments are no longer required.** Please disinfect each machine you use with provided cleaning materials.
- **We will be checking temperatures at the door. If you have a temperature of 99.9° or above, you will not be permitted entry into the building.**
- **Lamination may take up to a week to complete.** We will call when your items are ready for pick up!
- **Die cut orders may take up to two weeks to complete.** We will call when your items are ready for pick up!
- **CCC will close at 3:30PM every day for disinfection and sanitization.**
- **Children under the age of 16 are not allowed in the resource room.**

Class Registration

1. **Masks are now optional.** If you would like a mask, we will provide a disposable one for you!
2. Temperatures will be checked at the door at every session. **If you have a fever of 99.9° or above, you will not be allowed to attend the training session.**
3. To register for face-to-face classes, please call (256) 551-7016 OR send an email to region1@tcrchildcare.org. Please register at least TWO business days in advance.*
4. **To register for online classes, please follow the instructions found on page 17.**
5. Virtual and in-person attendees are expected to actively participate in ALL training activities and complete pre-assessment and post-assessment tests. **Your camera is required to be on during virtual training sessions.**
6. **CCC reserves the right to cancel training sessions due to lack of registration, as well as COVID-19 diagnosis or exposure. All registered participants will be notified immediately if cancellation occurs.**
7. **Children under the age of 16 are not allowed to attend or stay for training sessions.**
8. CCC training is open to all persons regardless of race, national origin, religion, age, sex, political beliefs, or disability.

*Important Update Regarding Alabama Pathways

On July 1, 2023, Alabama Pathways, also known as the Professional Development Registry (PDR) website went down for transitional maintenance. At this time, it is unclear how long the process will take. During this time, CCC's registration process will revert to how it was prior to the implementation of Pathways, as indicated above. We will also return to issuing physical certificates for in-person training, until further notice.



Learning Legend

DHR Performance Standards Training Areas (DHR Area)		Alabama Pathways Core Knowledge Areas (CKA Area)		Child Development Associate Subject Areas (CDA Area)		Child Care & Development Fund Training Areas (CCDF Area)
CD	Child Development	CGD	Child Growth and Development	1	Planning a safe and healthy environment to invite learning	1. Prevention and control of infectious diseases (including immunizations) 2. SIDS and safe sleep practices 3. Administration of medication 4. Prevention/response to food allergies 5. Building and physical premises safety, including identifying electrical hazards, bodies of water, and vehicular traffic 6. Shaken Baby Syndrome and head trauma 7. Emergency preparedness and response planning for natural or man-created events 8. Storage of hazardous materials and bio-contaminants 9. Pre-cautions in transporting children 10. First-aid CPR 11. Recognizing and reporting child abuse and neglect 12. Identifying and serving homeless children and their families 13. Promoting the social, emotional, physical, and cognitive development of children, including those related to nutrition and physical activity, using scientifically-based, developmentally appropriate and age appropriate strategies 14. Caring for children in geographic areas with significant concentrations of poverty and unemployment 15. Implementing behavior strategies, including positive behavior interventions and support models that promote positive social and emotional development and reduce challenging behaviors, including reducing expulsions of preschool-aged children for such behaviors 16. Engaging parents and families in culturally and linguistically appropriate ways to expand their knowledge, skills and capacity to be meaningful partners in supporting their children's positive development 17. Understanding early neurological development 18. Using data to guide program improvement 19. Supporting positive development of school-age children 20. Improving the quality of program's and services for infants and toddlers
LD	Language Development	HSN	Health, Safety and Nutrition	2	Steps to advance children's physical and intellectual development	
PDG	Positive Discipline and Guidance	LEE	Learning Experiences and Enrichment	3	Positive ways to support children's social and emotional development	
HSUP	Health, Safety and Universal Precautions	COA	Child Observation and Assessment (Planning for Individual Needs)	4	Strategies to establish productive relationships with families	
QCCL	Quality Child Care and Licensing	DIV	Diversity	5	Strategies to manage an effective program operation	
CCPF	Child Care Professional and the Family	ICFC	Interaction with Children, Families and Communities	6	Maintaining a commitment to professionalism	
AM	Administration and Management	PPD	Personal and Professional Development	7	Observing and recording children's behavior	
		MA	Management and Administration	8	Principles of child growth and development	
Training Levels					Training Tracks/Target Age Groups	
Basic (B)		Most appropriate for entry level professionals who are new to early childhood and/or school-age care			Infant	Birth to 12 Months
Intermediate (I)		For professionals who have at least two(2) years experience and 120 hours of training in child development and are moving toward more formal education			Toddler	1 and 2 years old
Advanced (A)		For professionals who have at least three (3) years of experience and 30 credit hours in child development. Advanced level training focuses on a more through knowledge of developmentally appropriate practice and high effective application and demonstration skills.			Preschool	3 and 4 years old
					School-Age	5 to 12 years old
					ALL	Infant, Toddler, Preschool, and School-Age
Alabama Standards for Early Learning & Development Areas (ASELD Area)					QRIS Rubric Areas (QRIS Area)	
FCE	Family and Community Engagement				1	Curriculum and Instruction
SED	Social and Emotional Development				2	Screening and Assessment
SST	Social Studies				3	Family Engagement
APL	Approaches to Play and Learning				4	Professional Credential
SEK	Science Exploration and Knowledge				5	Environment
MET	Mathematical Thinking				6	Program Design
LLT	Language and Literacy					
CRA	Creative Arts					
PDH	Physical Development and Health					

CCC E-Learning Train & Virtual Classroom

Welcome to Learning on Demand!



New Participants

1. Have your center director send an email to elarning@tcrchildcare.org and request for an account to be created for you. *If you are not currently employed by a facility and are interested in opening your own, you may send the email yourself; however, please be sure to indicate that in your email.* The following information must be included:
 - Your First & Last Name
 - Your Email Address
 - Center Name & Address (if applicable)
 - County
2. Once your account is created, you will receive an email with your login information.
3. Using your username and password, login to the e-learning website: www.cccelearningtrain.com
4. Choose your course, click "Enroll Me", and begin.
5. Once you have completed **all requirements** for a course, download and print your certificate.

Returning Participants

1. Using your username and password, login to the e-learning website: www.cccelearningtrain.com
2. Choose your course, click "Enroll Me", and begin.
3. Once you have completed **all requirements** for a course, download and print your certificate.

Any account inactive longer than 12 months will be deleted. Any account outside of Regions 1 & 8 will eventually be deleted*. If you have issues or questions regarding E-learning, email: elarning@tcrchildcare.org.

During the last month of every quarter, there will be a closing date. This is for our required reporting purposes. The closing date will be posted on the E-learning website every quarter, for your convenience.

Quarter	Quarter Ends
1st	Dec. 31
2nd	Mar. 30
3rd	Jun. 30
4th	Sep. 30

Virtual Classroom



CCC offers live, virtual classes!
These classes are offered through our E-learning site:
www.cccelearningtrain.com.

Virtual Class Registration Steps

1. **You will need to have an account to participate.** If you do not have one, please follow the steps under **New Participants** on the left of this page to have an account created.
2. Choose the class(es) you would like to register for at least 2 business days in advance.
3. Call (256) 551-7016 OR email region1@tcrchildcare.org with the following information:
 - First & Last Name
 - Phone Number
 - Email Address
3. 15-20 minutes ahead of time, on the day of the class, login to the E-learning site, www.cccelearningtrain.com, and scroll down until you see the folder titled "Virtual Classroom". Click this folder, then click on the class you registered for.
4. Take the preview. It will be available as early as 2 business days in advance of the training.
5. Watch virtual presentation at scheduled date/time.
6. Take the review. *Both preview AND review are required to receive a certificate.*
7. Download and print your certificate!

*Please send an email with any comments or suggestions, once you have participated.
Thank you!*



Business hours are **8AM-4:30PM, Monday-Friday**. Allow 1-2 business days for email responses from the E-learning facilitator. **For E-learning assistance, please call (256) 282-9453.**

*For a map of counties in Regions 1 & 8, please visit: <https://www.tcrchildcarecorporation.org/ccc-quality/>

Online & Virtual Training Opportunities

The following list of titles highlights **some online trainings**. Please login and view the website, www.cccelearningtrain.com, for a complete list of available courses. All classes are *self-enroll* once your account has been created. *Anyone currently registered in the Moodle system can simply click "Enroll me" on a selected course to begin.*

Online Training Opportunities

Title	Level	DHR Area	CDA Area	CKA Area	CCDF Area	ASELD Area	QRIS Area	Training Track
Basics in Child Care (6 hrs.)	Basic	All except AM	1, 2, 3, 4, 6, 7, 8	All except MA	All except 10	ALL	1, 2, 3, 5, 6.9	ALL
CCDF Area 1: Prevention & Control of Infectious Diseases (1 hr.)	Basic	HSUP	1	HSN	1	PDH2a	1	ALL
CCDF Area 2: SIDS & Safe Sleep Practices (1 hr.)	Basic	HSUP	1	HSN	2	PDH2a	1	ALL
CCDF Area 3: Administration of Medication (1 hr.)	Basic	HSUP	1	HSN	3	PDH2a	1	ALL
CCDF Area 4: Prevention/Response to Food Allergies (1 hr.)	Basic	HSUP	1	HSN	4	PDH2a	1	ALL
CCDF Area 5: Building & Physical Premises Safety (1 hr.)	Basic	HSUP	1	HSN	5	PDH2a	1	ALL
CCDF Area 6: Shaken Baby Syndrome & Head Trauma (1 hr.)	Basic	HSUP	1	HSN	6	PDH2a	1	ALL
CCDF Area 7: Emergency Preparedness (1 hr.)	Basic	HSUP	1	HSN	7	PDH2a	1	ALL
CCDF Area 8: Handling & Storage of Hazardous Materials (1 hr.)	Basic	HSUP	1	HSN	8	PDH2a	1	ALL
CCDF Area 9: Transporting Children (1 hr.)	Basic	HSUP	1	HSN	9	PDH2a	1	ALL
CCDF Area 10: Basic First-Aid & CPR* (1 hr.) <i>*This training does NOT certify participants in CPR</i>	Basic	HSUP	1	HSN	10	PDH2a	1	ALL
CCDF Area 11: Recognizing & Reporting Child Abuse & Neglect (1 hr.)	Basic	HSUP	1	HSN	11	PDH2a	1	ALL

Virtual Training Opportunities

Date	Title	Time	Level	DHR Area	CDA Area	CKA Area	CCDF Area	ASELD Area	QRIS Area	Training Track
January—March 2024 (Please register at least TWO business days in advance)										
Thursday 3/21/24	Nursery Rhyme Crime Escape Room	6:30 PM—8:30 PM	B	QCCL	2	LEE	13, 15, 19, 20	N/A	N/A	ALL

The virtual course(s) above will be hosted on the CCC E-learning website: www.cccelearningtrain.com.
Certificates will be issued via the E-learning website as well.

Training Opportunities

Date	Title	Time	Location	Level	DHR Area	CDA Area	CKA Area	CCDF Area	ASELD Area	QRIS Area	Training Track
Colbert County <i>(Please register at least TWO business days in advance)</i>											
Wednesday 1/10/24	Basics in Child Care	9:00 AM— 4:00 PM	NWSCC Bldg. 110 800 George Wallace Blvd. Muscle Shoals, AL 35661	B	All except AM	1, 2, 3, 4, 6, 7, 8	All except MA	All except 10	ALL	1, 2, 3, 5, 6.9	ALL
Thursday 1/11/24	Director: Speaking the Language of Conscious Discipline	6:30 PM— 8:30 PM	NWSCC Bldg. 127, Rm. 102 800 George Wallace Blvd. Muscle Shoals, AL 35661	I	AM, LD	3	ICFC, MA	13	SED	5	Director
Thursday 1/25/24	How to Talk to Parents	6:30 PM— 8:30 PM	NWSCC Bldg. 127, Rm. 102 800 George Wallace Blvd. Muscle Shoals, AL 35661	B	CCPF	1, 4	ICFC	13, 16	FCE	3	ALL
Tuesday 2/6/24	APT Presents: Stepping Stones: Developmental Milestones from Ages 0-24 Months	6:30 PM— 8:30 PM	NWSCC Bldg. 127, Rm. 102 800 George Wallace Blvd. Muscle Shoals, AL 35661	B	CD, LD	3, 8	CGD	13, 17, 20	N/A	N/A	Infant/Toddler
Tuesday 2/20/24	CCDF Areas 10 & 11: Child Abuse & Neglect/First Aid	6:30 PM— 8:30 PM	NWSCC Bldg. 127, Rm. 102 800 George Wallace Blvd. Muscle Shoals, AL 35661	B	HSUP	1	HSN	10, 11	PDH2a	1	ALL
Tuesday 2/27/24	Who Needs the Mess? Family Style Meals	6:30 PM— 8:30 PM	NWSCC Bldg. 127, Rm. 102 800 George Wallace Blvd. Muscle Shoals, AL 35661	B	HSUP	1	HSN	13	PDH	5	Preschool
Tuesday 3/5/24	Making Positive Connections for Positive Guidance	6:30 PM— 8:30 PM	NWSCC Bldg. 127, Rm. 102 800 George Wallace Blvd. Muscle Shoals, AL 35661	B	PDG	1, 3	CGD, HSN, ICFC	7, 13	SED	5	Infant/Toddler
Thursday 3/7/24	CCDF Areas 5 & 8: Building & Physical Premises Safety/Handling & Storage of Hazardous Materials	6:30 PM— 8:30 PM	NWSCC Bldg. 127, Rm. 102 800 George Wallace Blvd. Muscle Shoals, AL 35661	B	HSUP	1	HSN	5, 8	PDH2a	1	ALL
Tuesday 3/12/24	APT Presents: Innovative Inventors	6:30 PM— 8:30 PM	NWSCC Bldg. 127, Rm. 102 800 George Wallace Blvd. Muscle Shoals, AL 35661	B	CD	2	CGD, DIV, LEE	19	N/A	N/A	School-Age
Cullman County <i>(Please register at least TWO business days in advance)</i>											
Tuesday 1/16/24	CCDF Areas 2 & 6: SIDS & Safe Sleep Practices/Shaken Baby Syndrome & Abusive Head Trauma	6:00 PM— 8:00 PM	Early Years Preschool 400 Wesley Ave. N Cullman, AL 35058	B	HSUP	1	HSN	2, 6	PDH2a	1	ALL
Thursday 1/25/24	Beauty is in the Eye of the Beholder	6:00 PM— 8:00 PM	Early Years Preschool 400 Wesley Ave. N Cullman, AL 35058	I	QCCL	8	CGD, LEE	8	N/A	N/A	Preschool
Monday 2/5/24	Nursery Rhyme Crime Escape Room	6:00 PM— 8:00 PM	Early Years Preschool 400 Wesley Ave. N Cullman, AL 35058	B	QCCL	2	LEE	13, 15, 19, 20	N/A	N/A	ALL
Thursday 2/22/24	CCDF Areas 10 & 11: Child Abuse & Neglect/First Aid	6:00 PM— 8:00 PM	Early Years Preschool 400 Wesley Ave. N Cullman, AL 35058	B	HSUP	1	HSN	10, 11	PDH2a	1	ALL
Monday 3/4/24	CCDF Areas 5 & 8: Building & Physical Premises Safety/Handling & Storage of Hazardous Materials	6:00 PM— 8:00 PM	Early Years Preschool 400 Wesley Ave. N Cullman, AL 35058	B	HSUP	1	HSN	5, 8	PDH2a	1	ALL
Tuesday 3/12/24	Guiding Choices	6:00 PM— 8:00 PM	Early Years Preschool 400 Wesley Ave. N Cullman, AL 35058	I	PDG	3, 8	CGD	13, 20	SED	1	Infant/Toddler

Training Opportunities

Date	Title	Time	Location	Level	DHR Area	CDA Area	CKA Area	CCDF Area	ASELD Area	QRIS Area	Training Track
Franklin County <i>(Please register at least TWO business days in advance)</i>											
Tuesday 1/9/24	CCDF Areas 2 & 6: SIDS & Safe Sleep Practices/Shaken Baby Syndrome & Abusive Head Trauma	6:30 PM— 8:30 PM	New Freedom Daycare 508 Saint Claire St. Russellville, AL 35653	B	HSUP	1	HSN	2, 6	PDH2a	1	ALL
Tuesday 1/23/24	How to Talk to Parents	6:30 PM— 8:30 PM	New Freedom Daycare 508 Saint Claire St. Russellville, AL 35653	B	CCPF	1, 4	ICFC	13, 16	FCE	3	ALL
Tuesday 2/20/24	Who Needs the Mess? Family Style Meals	6:30 PM— 8:30 PM	New Freedom Daycare 508 Saint Claire St. Russellville, AL 35653	B	HSUP	1	HSN	13	PDH	5	Preschool
Thursday 2/29/24	CCDF Areas 10 & 11: Child Abuse & Neglect/First Aid	6:30 PM— 8:30 PM	New Freedom Daycare 508 Saint Claire St. Russellville, AL 35653	B	HSUP	1	HSN	10, 11	PDH2a	1	ALL
Thursday 3/21/24	Making Positive Connections for Positive Guidance	6:30 PM— 8:30 PM	New Freedom Daycare 508 Saint Claire St. Russellville, AL 35653	B	PDG	1, 3	CGD, HSN, ICFC	7, 13	SED	5	Infant/ Toddler
Lauderdale County <i>(Please register at least TWO business days in advance)</i>											
Thursday 1/18/24	How to Talk to Parents	6:30 PM— 8:30 PM	Mars Hill Preschool 698 Cox Creek Parkway Florence, AL 35630	B	CCPF	1, 4	ICFC	13, 16	FCE	3	ALL
Tuesday 2/13/24	Who Needs the Mess? Family Style Meals	6:30 PM— 8:30 PM	Mars Hill Preschool 698 Cox Creek Parkway Florence, AL 35630	B	HSUP	1	HSN	13	PDH	5	Preschool
Tuesday 3/19/24	Making Positive Connections for Positive Guidance	6:30 PM— 8:30 PM	Mars Hill Preschool 698 Cox Creek Parkway Florence, AL 35630	B	PDG	1, 3	CGD, HSN, ICFC	7, 13	SED	5	Infant/ Toddler
Lawrence County <i>(Please register at least TWO business days in advance)</i>											
Wednesday 1/10/24	Supporting Babies & Toddlers on Their Path to Resilience	6:30 PM— 8:30 PM	Kids Kount 23631 AL Hwy. 24 Trinity, AL 35673	B	CD, PDG	3, 8	CGD, LEE	13, 14	N/A	N/A	Infant/ Toddler
Thursday 2/8/24	Beauty is in the Eye of the Beholder	6:30 PM— 8:30 PM	Kids Kount 23631 AL Hwy. 24 Trinity, AL 35673	I	QCCL	8	CGD, LEE	13	N/A	N/A	Preschool
Thursday 3/14/24	Nursery Rhyme Crime Escape Room	6:30 PM— 8:30 PM	Kids Kount 23631 AL Hwy. 24 Trinity, AL 35673	B	QCCL	2	LEE	13, 15, 19, 20	N/A	N/A	ALL
Limestone County <i>(Please register at least TWO business days in advance)</i>											
Monday 1/22/24	Feel the Power of Positivity! Promoting a Positive Mindset to Achieve Positive Outcomes	6:30 PM— 8:30 PM	Friendship Learning Ctr. 16479 Lucas Ferry Rd. Athens, AL 35611	B	PDG	1, 3	CGD, LEE	15, 19	SED	N/A	School-Age
Monday 2/12/24	Literacy Boxes for Babies and Toddlers	6:30 PM— 8:30 PM	Friendship Learning Ctr. 16479 Lucas Ferry Rd. Athens, AL 35611	B	LD	2, 8	LEE	13, 20	LLT	N/A	Infant/ Toddler
Monday 3/11/24	I Can Relate	6:30 PM— 8:30 PM	Friendship Learning Ctr. 16479 Lucas Ferry Rd. Athens, AL 35611	B	CCPF	1, 3	PPD	13	N/A	N/A	Preschool

Training Opportunities

Date	Title	Time	Location	Level	DHR Area	CDA Area	CKA Area	CCDF Area	ASELD Area	QRIS Area	Training Track
Madison County (Please register at least TWO business days in advance)											
Wednesday 1/3/24	Supporting Babies & Toddlers on Their Path to Resilience	6:30 PM—8:30 PM	Child Care Central, Huntsville	B	CD, PDG	3, 8	CGD, LEE	13, 14	N/A	N/A	Infant/Toddler
Tuesday 1/9/24	APT: More than 1, 2, 3... What is Early Numeracy?	6:30 PM—8:30 PM	Child Care Central, Huntsville	B	CD, QCCL	8	CGD, LEE	13	N/A	N/A	Preschool
Wednesday 1/10/24	Basics in Child Care	9:00 AM—4:00 PM	Child Care Central, Huntsville	B	All except AM	1, 2, 3, 4, 6, 7, 8	All except MA	All except 10	ALL	1, 2, 3, 5, 6, 9	ALL
Wednesday 1/17/24	Directors' Roundtable (Directors & FCC/GCC Licensees ONLY)	10:00 AM—12:00 PM	Child Care Central, Huntsville	A	AM, CCPF	4, 5, 6	ICFC, MA	13, 18, 20	N/A	N/A	Director
Monday 1/22/24	CCDF Areas 2 & 6: SIDS & Safe Sleep Practices/Shaken Baby Syndrome & Abusive Head Trauma	6:30 PM—8:30 PM	Child Care Central, Huntsville	B	HSUP	1	HSN	2, 6	PDH2a	1	ALL
Tuesday 1/23/24	Feel the Power of Positivity! Promoting a Positive Mindset to Achieve Positive Outcomes	6:30 PM—8:30 PM	Child Care Central, Huntsville	B	PDG	1, 3	CGD, LEE	15, 19	SED	N/A	School-Age
Wednesday 1/24/24	AELG Session 1: Introduction	9:00 AM—11:00 AM	Child Care Central, Huntsville	B	CD	8	CGD	13, 17, 20	N/A	N/A	I/T & Preschool
Wednesday 1/24/24	AELG Session 2: Observation	12:00 PM—2:00 PM	Child Care Central, Huntsville	B	CD	7, 8	CGD, COA	13, 17, 18, 20	N/A	N/A	I/T & Preschool
Wednesday 1/24/24	AELG Session 3: The Role of the Parent and Caregiver	2:00 PM—4:00 PM	Child Care Central, Huntsville	B	CCPF, QCCL	4, 6	ICFC, PPD	16, 20	N/A	N/A	I/T & Preschool
Wednesday 1/31/24	Director: Creating Language and Literacy Centers	1:00 PM—3:00 PM	Child Care Central, Huntsville	I	AM, LD	2, 3, 5, 8	CGD, LEE, MA	13	N/A	N/A	Director
Monday 2/5/24	CCDF Areas 10 & 11: Child Abuse & Neglect/First Aid	6:30 PM—8:30 PM	Child Care Central, Huntsville	B	HSUP	1	HSN	10, 11	PDH2a	1	ALL
Tuesday 2/6/24	Director: Focusing on Families: Building Partnerships	1:00 PM—3:00 PM	Child Care Central, Huntsville	I	AM	4, 5, 6	ICFC, MA	16	FCE	3	Director
Wednesday 2/7/24	Supporting Babies & Toddlers on Their Path to Resilience	6:30 PM—8:30 PM	Child Care Central, Huntsville	B	CD, PDG	3, 8	CGD, LEE	13, 14	N/A	N/A	Infant/Toddler
Tuesday 2/13/24	Literacy Boxes for Babies and Toddlers	6:30 PM—8:30 PM	Child Care Central, Huntsville	B	LD	2, 8	LEE	13, 20	LLT	N/A	Infant/Toddler
Thursday 2/15/24	Nursery Rhyme Crime Escape Room	6:30 PM—8:30 PM	Child Care Central, Huntsville	B	QCCL	2	LEE	13, 15, 19, 20	N/A	N/A	ALL
Wednesday 2/21/24	AELG Session 4: Self-Concept and Emotional Development	9:00 AM—11:00 AM	Child Care Central, Huntsville	B	CD, PDG	3, 8	CGD, DIV	13, 15, 17, 20	N/A	N/A	I/T & Preschool
Wednesday 2/21/24	AELG Session 5: Social Development	12:00 PM—2:00 PM	Child Care Central, Huntsville	B	CD, PDG	3, 8	CGD	15, 17, 20	N/A	N/A	I/T & Preschool
Wednesday 2/21/24	AELG Session 6: Language and Literacy Development	2:00 PM—4:00 PM	Child Care Central, Huntsville	B	LD	2, 8	CGD	17, 20	N/A	N/A	I/T & Preschool
Tuesday 3/5/24	APT Presents: Innovative Inventors	6:30 PM—8:30 PM	Child Care Central, Huntsville	B	CD	2	CGD, DIV, LEE	19	N/A	N/A	School-Age

Training Opportunities

Date	Title	Time	Location	Level	DHR Area	CDA Area	CKA Area	CCDF Area	ASELD Area	QRIS Area	Training Track
Madison County (continued) <i>(Please register at least TWO business days in advance)</i>											
Wednesday 3/6/24	AELG Session 7: Physical Development	9:00 AM— 11:00 AM	Child Care Central, Huntsville	B	CD, HSUP	2, 8	CGD, HSN	13, 20	N/A	N/A	I/T & Preschool
Wednesday 3/6/24	AELG Session 8: Cognitive Development	12:00 PM— 2:00 PM	Child Care Central, Huntsville	B	CD	2, 8	CGD	13, 17, 20	N/A	N/A	I/T & Preschool
Wednesday 3/6/24	AELG Session 9: Putting it All Together for Alabama's Children	2:00 PM— 4:00 PM	Child Care Central, Huntsville	B	CCPF, QCCL	4, 6	ICFC, PPD	16, 18, 20	N/A	N/A	I/T & Preschool
Thursday 3/7/24	CCDF Areas 5 & 8: Building & Physical Premises Safety/Handling & Storage of Hazardous Materials	6:30 PM— 8:30 PM	Child Care Central, Huntsville	B	HSUP	1	HSN	5, 8	PDH2a	1	ALL
Saturday 3/9/24	Literacy Boxes for Babies and Toddlers	8:30 AM— 10:30 AM	Child Care Central, Huntsville	B	LD	2, 8	LEE	13, 20	LLT	N/A	Infant/ Toddler
Saturday 3/9/24	Stonework Play—Telling Stories with Stones	10:30 AM— 12:30 PM	Child Care Central, Huntsville	I	LD	2, 3, 8	LEE	13	LLT1-3	1	ALL
Tuesday 3/12/24	I Can Relate	6:30 PM— 8:30 PM	Child Care Central, Huntsville	B	CCPF	1, 3	PPD	13	N/A	N/A	Preschool
Wednesday 3/13/24	Basics in Child Care	9:00 AM— 4:00 PM	Child Care Central, Huntsville	B	All except AM	1, 2, 3, 4, 6, 7, 8	All except MA	All except 10	ALL	1, 2, 3, 5, 6, 9	ALL
Wednesday 3/13/24	Supporting Babies & Toddlers on Their Path to Resilience	6:30 PM— 8:30 PM	Child Care Central, Huntsville	B	CD, PDG	3, 8	CGD, LEE	13, 14	N/A	N/A	Infant/ Toddler
Thursday 3/14/24	Director: Making Happy Happen	1:00 PM— 3:00 PM	Child Care Central, Huntsville	I	AM, CD	1, 8	CGD, MA	13	SED	N/A	Director
Morgan County <i>(Please register at least TWO business days in advance)</i>											
Tuesday 1/9/24	CCDF Areas 2 & 6: SIDS & Safe Sleep Practices/ Shaken Baby Syndrome & Abusive Head Trauma	6:00 PM— 8:00 PM	Kids Kastle Learning Center 112 Corsbie St. SW Hartselle, AL 35640	B	HSUP	1	HSN	2, 6	PDH2a	1	ALL
Tuesday 1/23/24	APT: More than 1, 2, 3... What is Early Numeracy?	6:00 PM— 8:00 PM	Kids Kastle Learning Center 112 Corsbie St. SW Hartselle, AL 35640	B	CD, QCCL	8	CGD, LEE	13	N/A	N/A	Preschool
Tuesday 2/13/24	Understanding the Whole Child: The Basis for Environmental Design	6:00 PM— 8:00 PM	Kids Kastle Learning Center 112 Corsbie St. SW Hartselle, AL 35640	I	CD	7, 8	CGD, LEE	17, 18, 19	APL	1	School- Age
Tuesday 3/19/24	Guiding Choices	6:00 PM— 8:00 PM	Kids Kastle Learning Center 112 Corsbie St. SW Hartselle, AL 35640	I	PDG	3, 8	CGD	13, 20	SED	1	Infant/ Toddler
Winston County <i>(Please register at least TWO business days in advance)</i>											
Tuesday 1/30/24	How to Talk to Parents	6:00 PM— 8:00 PM	Seymour Beville Daycare 26611 Hwy. 195 N Double Springs, AL 35553	B	CCPF	1, 4	ICFC	13, 16	FCE	3	ALL
Thursday 2/22/24	Who Needs the Mess? Family Style Meals	6:00 PM— 8:00 PM	Seymour Beville Daycare 26611 Hwy. 195 N Double Springs, AL 35553	B	HSUP	1	HSN	13	PDH	5	Preschool
Tuesday 3/26/24	Making Positive Connections for Positive Guidance	6:00 PM— 8:00 PM	Seymour Beville Daycare 26611 Hwy. 195 N Double Springs, AL 35553	B	PDG	1, 3	CGD, HSN, ICFC	7, 13	SED	5	Infant/ Toddler

Child Care Central, Region 1
2006 Franklin St. SE, Suite 103
Huntsville, AL 35801
(256) 551-7016
region1@tcrchildcare.org

NONPROFIT
U.S. POSTAGE PAID
PERMIT NO. 205
Sylacauga, AL

Counties of Service

Colbert, Cullman,
Franklin, Lauderdale,
Lawrence, Limestone,
Madison, Morgan
Winston

www.tcrchildcarecorporation.org



CCC, a division of TCR Child Care Corporation, is provided through a contract with the Alabama Department of Human Resources.



Closure Dates

Monday – January 1, 2024
New Year's Day

Monday – January 15, 2024
Martin Luther King Jr.'s Birthday

Monday – February 19, 2024
Presidents' Day



Come Join Us On:

Facebook: <https://www.facebook.com/Child-Care-Central-104390861401264>

Instagram: <https://www.instagram.com/childcarecentralccc/>

Pinterest: <https://www.pinterest.com/childcarecentral/>

YouTube: https://www.youtube.com/channel/UCTCdrCWDhRVDsx_bWZ5r0IQ



Severe Weather Policy

In cases of severe weather, CCC will contact all providers who are registered for scheduled training sessions by phone as soon as we make the decision to cancel the session (when possible).

It is very important to give your correct phone number, so that we can reach you in case of cancellation.